

Engineering progress
Enhancing lives

Integrated handles

Accentuate modern lines

REHAU integrated handles are available in two unique styles and six color options that provide a soft touch and streamlined aesthetic to complement modern cabinet design.

Product Specifications

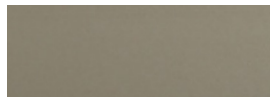
Appearance	Hidden Recessed profile or J Channel
Material	Anodized aluminum, multiple colors
End caps	Aluminum, color matches

Size Parameters

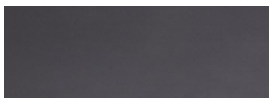
Minimum length	6 in (152.4 mm)
Maximum length	59 in (1498.6 mm)



Matte Silver



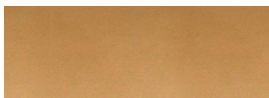
Matte Champagne



Matte Anthracite



Matte Black



Matte Gold



Matte White

Contact your regional REHAU representative for a sample or visit na.rehau.com/handles

United States (888) 734-2810

Canada (800) 361-0830

For updates to this publication, visit na.rehau.com/resourcecenter

The information contained herein is believed to be reliable, but no representations, guarantees or warranties of any kind are made as to its accuracy, suitability for particular applications or the results to be obtained therefrom. Before using, the user will determine suitability of the information for user's intended use and shall assume all risk and liability in connection therewith.

© 2023 REHAU

121.93 05.2023



1 Hidden Recessed 2mm

The 2 mm REHAU integrated handle is almost invisible and combines exceptionally well with a flat Gola profile. Also designed for upper cabinets doors.

2 J Channel 32mm

The 32 mm REHAU integrated handle features a visible channel in multiple finishes with metallic end caps.

