



MUNICIPEX®
Product catalog

PEXa piping for municipal applications.

www.municipex.com



Contents

MUNICIPEX® water service pipe	3
MUNICIPEX reclaim pipe	5
MUNICIPEX force main pipe	6
MUNICIPEX pre-insulated water service pipe	7



 PLASTICS·PIPE·INSTITUTE™ AWWA C904

For updates to this publication and the most current technical instructions, safety information and manufacturer's recommendations, visit www.na.rehau.com/resourcecenter

1. MUNICIPEX water service pipe

MUNICIPEX water service pipe is manufactured using the high-pressure peroxide extrusion method for cross-linked polyethylene (PEXa). MUNICIPEX water service pipe has a co-extruded blue PE shield that protects the pipe against ultraviolet light (sunlight) for an extended time.

MUNICIPEX water service pipe meets or exceeds the requirements of ASTM F876, CSA B137.5 and PPI TR-3, and is certified to NSF Standards 14/61 and AWWA C904. MUNICIPEX water service pipe meets the requirements of ASTM F2023 for chlorine resistance. MUNICIPEX is manufactured by REHAU using a quality management system that has been certified to the latest version of ISO 9001.

MUNICIPEX water service pipe is produced in SDR9 copper tube sizes (CTS) so that it is compatible with AWWA C800 valves and fittings when used with manufacturer's recommended insert, which is required to stiffen the pipe. MUNICIPEX water service pipe can also be used with the EVERLOC+® compression-sleeve fitting system, certified to ASTM F877.

See applicable REHAU technical documents for detailed temperature and pressure ratings. For service line and underground applications, it is the responsibility of the installer to ensure fittings selected meet local jurisdictional code.



3/4 in. MUNICIPEX water service pipe

Article no.	Description	Package quantity	Unit weight		Coils per pallet
			kg	lb	
261056-100	3/4 in. MUNICIPEX water service pipe 100 ft coil (30.5 m)	100 ft	4.9	10.9	62 coils
261056-300	3/4 in. MUNICIPEX water service pipe 300 ft coil (91.4 m)	300 ft	14.7	32.3	23 coils
261056-500	3/4 in. MUNICIPEX water service pipe 500 ft coil (152.4 m)	500 ft	24.6	54.3	14 coils
261056-000	3/4 in. MUNICIPEX water service pipe 1000 ft coil (304.8 m)	1000 ft	48.9	108.0	7 coils

Minimum order = 1 coil

1 in. MUNICIPEX water service pipe

Article no.	Description	Package quantity	Unit weight		Coils per pallet
			kg	lb	
261076-100	1 in. MUNICIPEX water service pipe 100 ft coil (30.5 m)	100 ft	7.9	17.5	23 coils
261076-300	1 in. MUNICIPEX water service pipe 300 ft coil (91.4 m)	300 ft	123.8	52.4	14 coils
261076-500	1 in. MUNICIPEX water service pipe 500 ft coil (152.4 m)	500 ft	39.7	87.5	7 coils
261076-000	1 in. MUNICIPEX water service pipe 1000 ft coil (304.8 m)	1000 ft	79.0	175.0	5 coils

Minimum order = 1 coil

1 1/4 in. MUNICIPEX water service pipe

Article no.	Description	Package quantity	Unit weight		Coils per pallet
			kg	lb	
261096-100	1 1/4 in. MUNICIPEX water service pipe 100 ft coil (30.5 m)	100 ft	11.6	25.5	10 coils
261096-300	1 1/4 in. MUNICIPEX water service pipe 300 ft coil (91.4 m)	300 ft	34.7	76.5	7 coils
261096-500	1 1/4 in. MUNICIPEX water service pipe 500 ft coil (152.4 m)	500 ft	57.8	127.5	5 coils
261096-000	1 1/4 in. MUNICIPEX water service pipe 1000 ft coil (304.8 m)	1000 ft	115.6	255.0	5 coils

Minimum order = 1 coil

1 1/2 in. MUNICIPEX water service pipe

Article no.	Description	Package quantity	Unit weight		Coils per pallet
			kg	lb	
261116-100	1 1/2 in. MUNICIPEX water service pipe 100 ft coil (30.5 m)	100 ft	16.0	35.0	5 coils
261116-300	1 1/2 in. MUNICIPEX water service pipe 300 ft coil (91.4 m)	300 ft	48.0	105.0	5 coils
261116-500	1 1/2 in. MUNICIPEX water service pipe 500 ft coil (152.4 m)	500 ft	80.0	175.0	5 coils
261116-111	1 1/2 in. MUNICIPEX water service pipe 1000 ft coil (304.8 m)	1000 ft	160.0	350.0	5 coils

Minimum order = 1 coil

2 in. MUNICIPEX water service pipe

Article no.	Description	Package quantity	Unit weight		Coils per pallet
			kg	lb	
261136-100	2 in. MUNICIPEX water service pipe 100 ft coil (30.5 m)	100 ft	27.4	60.0	5 coils
261136-300	2 in. MUNICIPEX water service pipe 300 ft coil (91.4 m)	300 ft	82.2	180.0	5 coils
261136-500	2 in. MUNICIPEX water service pipe 500 ft coil (152.4 m)	500 ft	137.0	300.0	4 coils
261136-111	2 in. MUNICIPEX water service pipe 1000 ft coil (304.8 m)	1000 ft	274.0	600.0	2 coils

Minimum order = 1 coil

2. MUNICIPEX reclaim pipe

MUNICIPEX reclaim pipe is manufactured using the high-pressure peroxide extrusion method for crosslinked polyethylene (PEXa). MUNICIPEX reclaim has a co-extruded purple PE shield which indicates use in reclaimed water applications.

MUNICIPEX reclaim pipe meets or exceeds the requirements of ASTM F876, CSA B137.5, and is certified by NSF Standard 14 and AWWA C904 for use in reclaimed water applications (cNSFus-rw). MUNICIPEX reclaim pipe meets the requirements of ASTM F2023 for chlorine resistance. MUNICIPEX reclaim pipe is manufactured by REHAU using a quality management system which has been certified to the latest version of ISO 9001.

MUNICIPEX reclaim pipe is produced in SDR9 copper tube sizes (CTS) so that it is compatible with AWWA C800 valves and fittings when used with manufacturer's recommended insert, which is required to stiffen the pipe. MUNICIPEX reclaim pipe can also be used with the EVERLOC+® compression-sleeve system certified to ASTM F877.



1 in. MUNICIPEX reclaim pipe

Article no.	Description	Package quantity	Unit weight		Coils per pallet
			kg	lb	
302706-100	1 in. MUNICIPEX reclaim pipe 100 ft coil (30.5 m)	100 ft	7.9	17.5	23 coils
302706-300	1 in. MUNICIPEX reclaim pipe 300 ft coil (91.4 m)	300 ft	123.8	52.4	14 coils
302706-500*	1 in. MUNICIPEX reclaim pipe 500 ft coil (152.4 m)	500 ft	39.7	87.5	7 coils
302706-111*	1 in. MUNICIPEX reclaim pipe 1000 ft coil (304.8 m)	1000 ft	79.0	175.0	5 coils

* This item is not stocked. Lead times may vary. Minimum order = 1 coil

2 in. MUNICIPEX reclaim pipe

Article no.	Description	Package quantity	Unit weight		Coils per pallet
			kg	lb	
302708-100	2 in. MUNICIPEX reclaim pipe 100 ft coil (30.5 m)	100 ft	27.4	60.0	5 coils
302708-300*	2 in. MUNICIPEX reclaim pipe 300 ft coil (91.4 m)	300 ft	82.2	180.0	5 coils
302708-500*	2 in. MUNICIPEX reclaim pipe 500 ft coil (152.4 m)	500 ft	137.0	300.0	4 coils
302708-111	2 in. MUNICIPEX reclaim pipe 1000 ft coil (304.8 m)	1000 ft	274.0	600.0	2 coils

* This item is not stocked. Lead times may vary. Minimum order = 1 coil

3. MUNICIPEX force main pipe

MUNICIPEX force main pipe is intended to convey wastewater under pressure from the discharge side of a pump or pneumatic ejector to a discharge point.

MUNICIPEX force main is color-coded with a green co-extruded coating and made with the high-pressure peroxide extrusion process for crosslinked polyethylene (PEXa). MUNICIPEX force main is flexible, easy to handle, and has a smooth interior wall for superior flow and constant pressure. MUNICIPEX force main is offered in coil lengths up to 500 ft (152.4 m) to reduce the number of joints as well as cost and time associated with installation.

MUNICIPEX force main meets or exceeds the requirements of ASTM F876, CSA B137.5 and PPI TR-3, and is certified to NSF Standard 14 and AWWA C904. MUNICIPEX force main meets the requirements of ASTM F2023 for chlorine resistance.

MUNICIPEX force main is manufactured by REHAU in a plant using a quality management system that is certified to ISO 9001. MUNICIPEX force main is produced in SDR9 copper tube sizes (CTS) so that it is compatible with AWWA C800 valves and fittings when used with manufacturer's recommended insert, which is required to stiffen the pipe.



1 1/4 in. MUNICIPEX force main pipe

Article no.	Description	Package quantity	Unit weight		Coils per pallet
			kg	lb	
318276-100	1 1/4 in. MUNICIPEX force main pipe 100 ft coil (30.5 m)	100 ft	11.6	25.5	5 coils
318276-300	1 1/4 in. MUNICIPEX force main pipe 300 ft coil (91.4 m)	300 ft	34.7	76.5	5 coils
318276-500	1 1/4 in. MUNICIPEX force main pipe 500 ft coil (152.4 m)	500 ft	57.8	127.5	5 coils

Minimum order = 1 coil

1 1/2 in. MUNICIPEX force main pipe

Article no.	Description	Package quantity	Unit weight		Coils per pallet
			kg	lb	
318272-100	1 1/2 in. MUNICIPEX force main pipe 100 ft coil (30.5 m)	100 ft	16.0	35.0	5 coils
318272-300	1 1/2 in. MUNICIPEX force main pipe 300 ft coil (91.4 m)	300 ft	48.0	105.0	5 coils
318272-500	1 1/2 in. MUNICIPEX force main pipe 500 ft coil (152.4 m)	500 ft	80.0	175.0	5 coils

Minimum order = 1 coil

2 in. MUNICIPEX force main pipe

Article no.	Description	Package quantity	Unit weight		Coils per pallet
			kg	lb	
318273-100	2 in. MUNICIPEX force main pipe 100 ft coil (30.5 m)	100 ft	27.4	60.0	5 coils
318273-300	2 in. MUNICIPEX force main pipe 300 ft coil (91.4 m)	300 ft	82.2	180.0	5 coils
318273-500	2 in. MUNICIPEX force main pipe 500 ft coil (152.4 m)	500 ft	137.0	300.0	5 coils

Minimum order = 1 coil

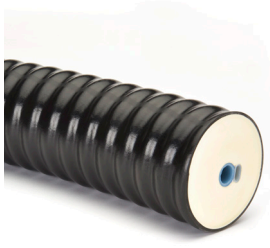
4. MUNICIPEX pre-insulated water service pipe

MUNICIPEX pre-insulated water service pipe is specially designed for water distribution in extreme cold climates that require an extra level of protection from freezing, or when laying pipe below the frost line is not possible.

MUNICIPEX pre-insulated water service consists of MUNICIPEX water service pipe surrounded by a solid layer of CFC-free polyurethane foam insulation and a corrugated LDPE outer casing. The outer casing "locks" the pipe firmly into the backfill while the insulation is bonded to both the outer casing and the MUNICIPEX water service pipe, increasing durability and flexibility.

MUNICIPEX pre-insulated water service is available in up to 300 ft (94 m) coils to reduce the number of joints needed for long pipe runs and provide ease of installation. MUNICIPEX water service pipe, connects easily to standard industry brass curb and main stops with the use of a stainless steel or plastic inserts. MUNICIPEX pre-insulated water service includes an integrated conduit to accommodate electric heat-trace cable.

The same standards and specifications as MUNICIPEX water service pipe apply.



MUNICIPEX pre-insulated pipe					
Article no.	Description	Package quantity	Unit weight		Minimum order qty
			kg	lb	
209094-100	1 in. MUNICIPEX pre-insulated water service pipe 100 ft coil (30.5 m)	100 ft	103.3	227.8	1 coil
209094-001	1 in. MUNICIPEX pre-insulated water service pipe 300 ft coil (91.4 m)	300 ft	310.0	683.4	1 coil
281761-100	2 in. MUNICIPEX pre-insulated water service pipe 100 ft coil (30.5 m)	100 ft	122.5	270.0	1 coil
281761-001	2 in. MUNICIPEX pre-insulated water service pipe 290 ft coil (88.4 m)	290 ft	355.9	783.0	1 coil



MUNICIPEX pre-insulated pipe heat shrink end caps					
Article no.	Description	Package quantity	Unit weight		Minimum order qty
			kg	lb	
209962-001	1 in. MUNICIPEX pre-insulated heat shrink end cap	1	0.12	0.26	1
209963-001	2 in. MUNICIPEX pre-insulated heat shrink end cap	1	0.25	0.54	1



MUNICIPEX pre-insulated pipe wall sealing rings					
Article no.	Description	Package quantity	Unit weight		Minimum order qty
			kg	lb	
240393-001	1 in. MUNICIPEX pre-insulated wall sealing ring	1	0.60	1.32	1
240403-001	2 in. MUNICIPEX pre-insulated wall sealing ring	1	0.69	1.54	1



MUNICIPEX pre-insulated pipe coupling shroud insulation kits

Article no.	Description	Package quantity	Unit weight		Minimum order qty
			kg	lb	
330068-001	1 in. MUNICIPEX pre-insulated coupling shroud insulation kit	1	1.6	3.5	1
330069-001	2 in. MUNICIPEX pre-insulated coupling shroud insulation kit	1	4.1	9.0	1



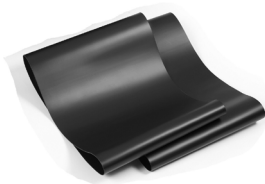
MUNICIPEX pre-insulated pipe elbow shroud insulation kits

Article no.	Description	Package quantity	Unit weight		Minimum order qty
			kg	lb	
330026-001	1 in. MUNICIPEX pre-insulated elbow shroud insulation kit	1	2.5	5.5	1
330027-001	2 in. MUNICIPEX pre-insulated elbow shroud insulation kit	1	6.0	13.2	1



MUNICIPEX pre-insulated pipe tee shroud insulation kits

Article no.	Description	Package quantity	Unit weight		Minimum order qty
			kg	lb	
330024-001	1 in. MUNICIPEX pre-insulated tee shroud insulation kit	1	2.8	6.2	1
330025-001	2 in. MUNICIPEX pre-insulated tee shroud insulation kit	1	5.6	12.3	1



MUNICIPEX pre-insulated pipe heat shrink sleeves

Article no.	Description	Unit weight		Minimum order qty
		kg	lb	
297991-033	Heat shrink sleeve for 1 in. MUNICIPEX pre-insulated pipe insulation kits	0.79	1.74	1 m
330027-001	Heat shrink sleeve for 2 in. MUNICIPEX pre-insulated pipe insulation kit	0.96	2.12	1 m



MUNICIPEX pipe cutters

Article no.	Description	Package quantity	Unit weight		Minimum order qty
			kg	lb	
137495	Pipe cutter for up to 1 in. MUNICIPEX	1	0.17	0.38	1
315242-001	Pipe cutter for up to 1 1/2 in. MUNICIPEX	1	0.41	0.90	1
131558-001	Pipe cutter for up to 2 in. MUNICIPEX	1	1.09	2.41	1

Contact us

www.municipex.com

Canada

Atlantic Canada (800) 561-9609

Québec (800) 361-0830

Ontario (800) 561-9609

Western Canada (800) 944-1011

United States

Eastern US (800) 297-6371

Western US (800) 944-1011

Warranty

REHAU stands behind our products with a 25-year limited warranty on PEXa pipe and fittings.

www.na.rehau.com/warranties

Return policy

Each return will be reviewed individually. No material may be returned without our written permission and return authorization number. Only standard articles sold within the previous 12 months may be returned, no returns will be accepted for non-standard articles. No returns for custom-cut lengths of pre-insulated pipes. The minimum return value is be \$100 USD. Product must be received in original packaging and articles must be in saleable condition, all products returned to the distribution center are subject to quality inspection. Packages must have original labels, customer label must be removed prior to return. Any material which is authorized to be returned will be subject to a minimum twenty-five (25) percent restocking fee.

Updates

For updates to this publication, visit na.rehau.com/resourcecenter

The information contained herein is believed to be reliable, but no representations, guarantees or warranties of any kind are made as to its accuracy, suitability for particular applications or the results to be obtained therefrom. Before using, the user will determine suitability of the information for user's intended use and shall assume all risk and liability in connection therewith.

© 2022 REHAU

855.300 US,CA/en 03.2022