

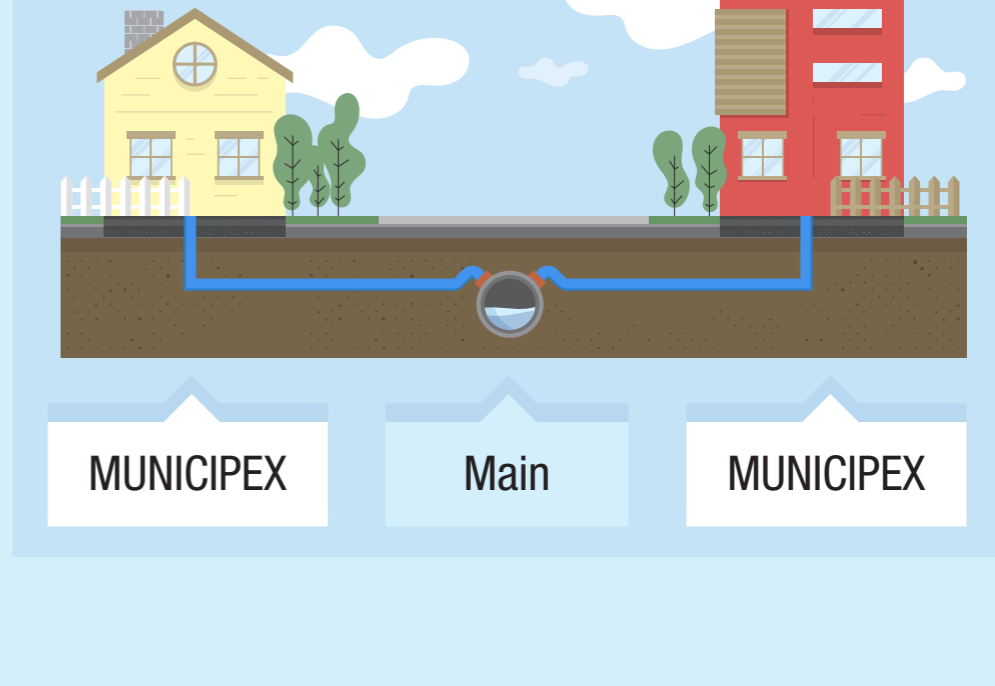
MUNICIPEX®

Piping that PERFORMS

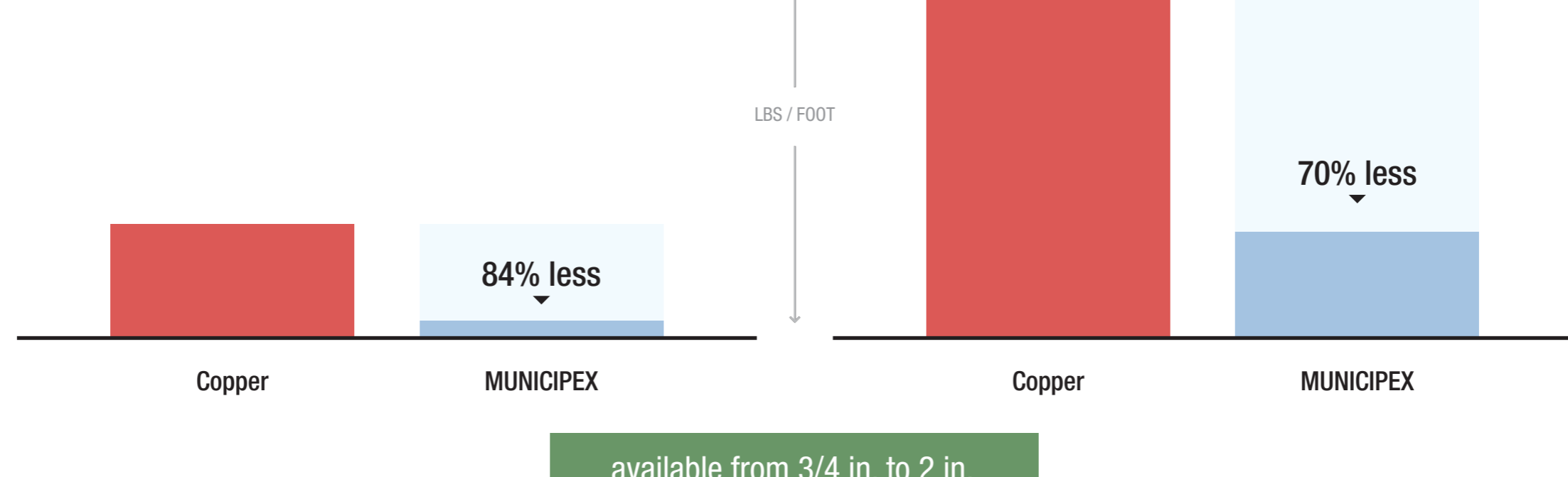
From new construction to repairs, it's essential to choose the right pipe for your work—one that will do its job, do it well, and last for a long time with no maintenance needs. MUNICIPEX, from REHAU, is a proven, reliable option that gives the versatility and flexibility you need for any municipal project.

MUNICIPEX AT A GLANCE

HIGH-PERFORMANCE PEXa WATER SERVICE LINE



LIGHTWEIGHT

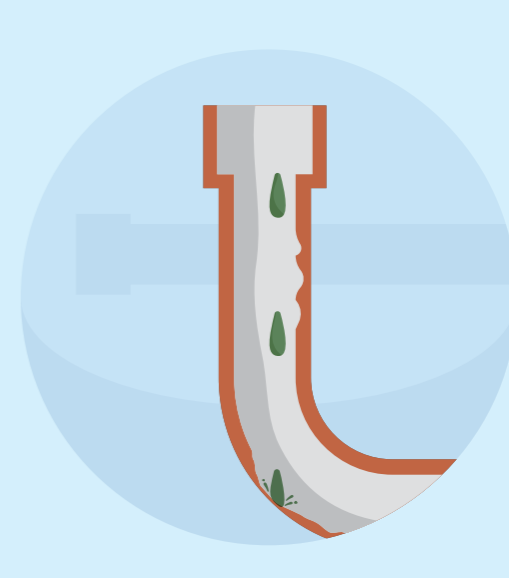
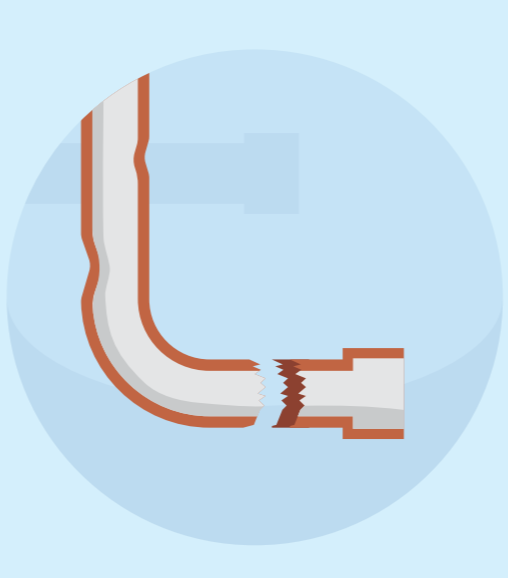
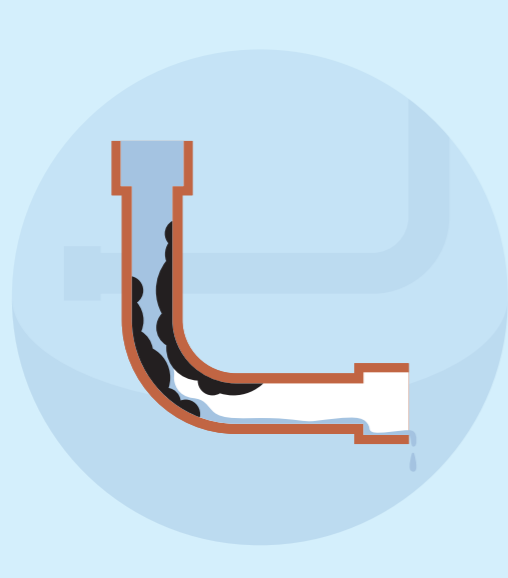


EASIER TO HANDLE



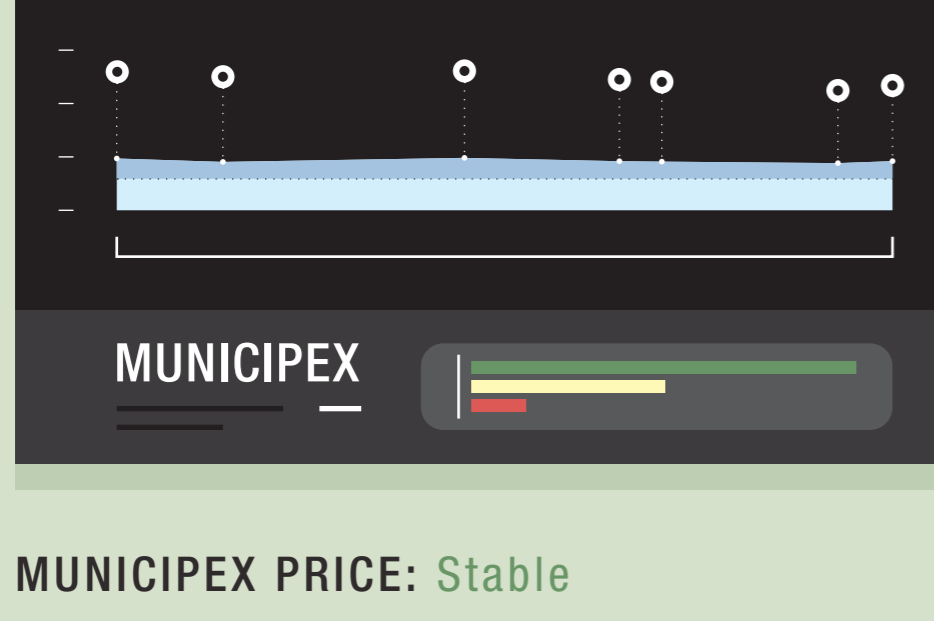
Flexibility: Bends 5x its outside diameter (OD)

RESISTANT TO COMMON COPPER PIPING CHALLENGES



MUNICIPEX IS COST-EFFECTIVE + ENVIRONMENT-FRIENDLY

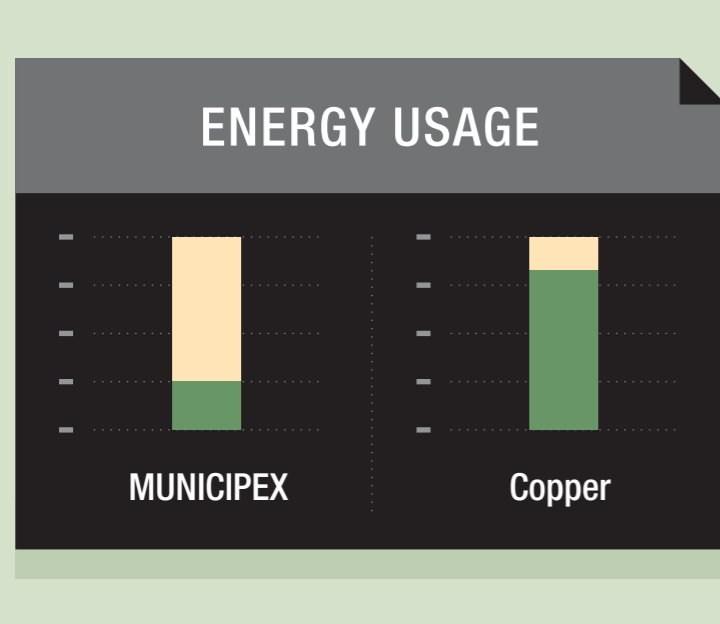
BUDGET CERTAINTY



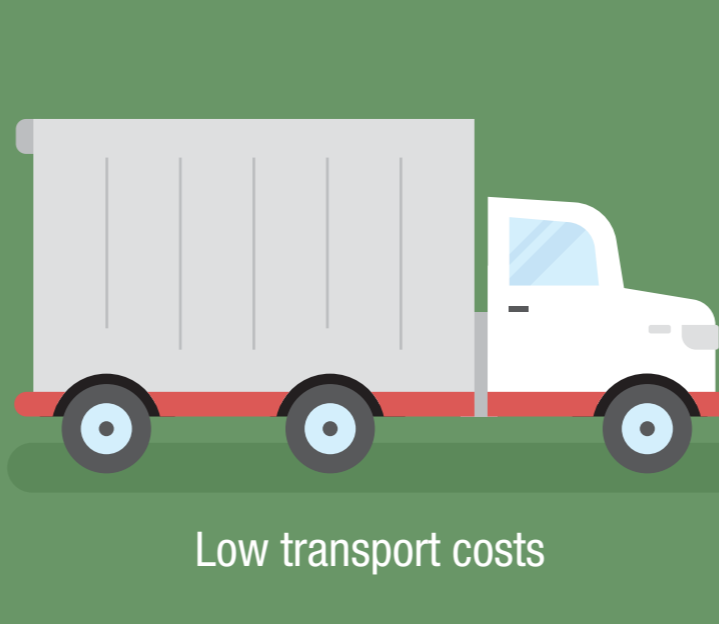
VS



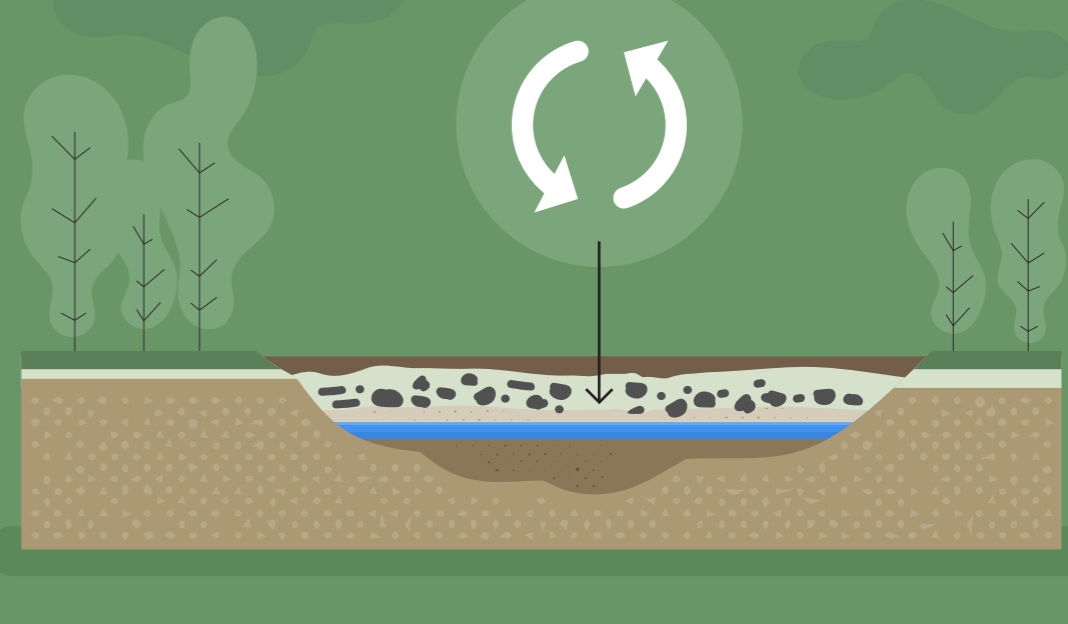
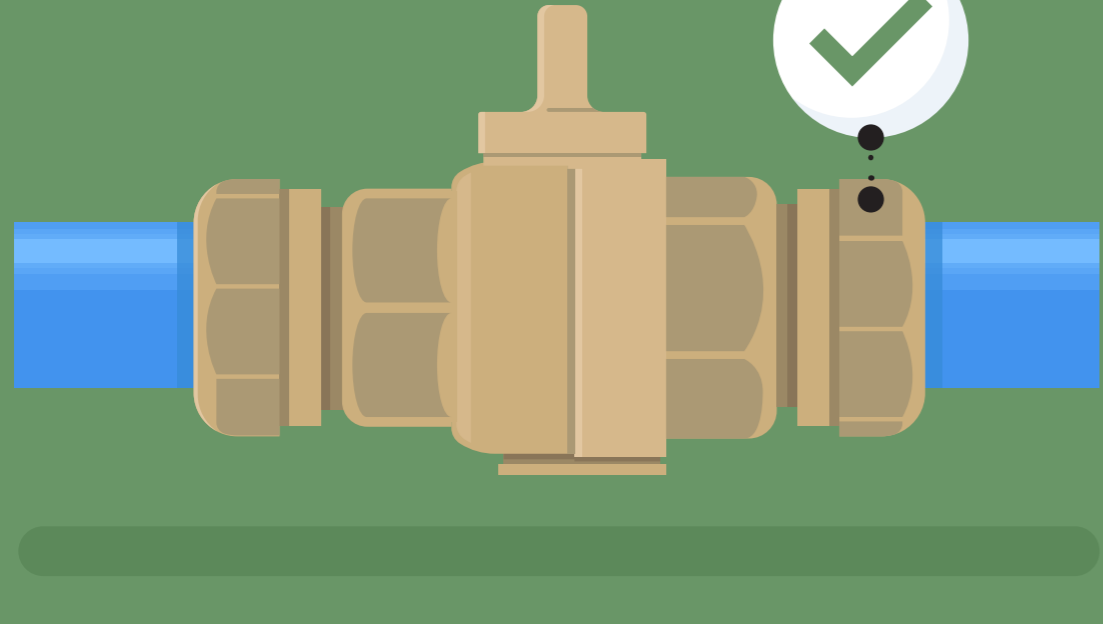
SUSTAINABILITY



LOW-COST INSTALLATION

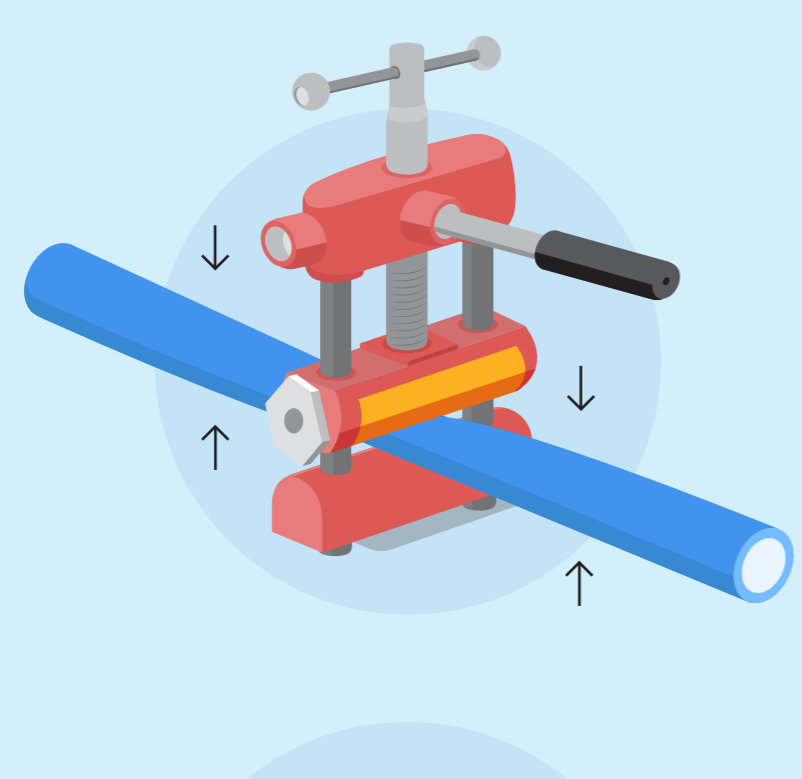


Multiple coil lengths
Consecutive footage marks every 3ft. reduce product waste and overspending
1,000ft coil lengths eliminate need for couplings



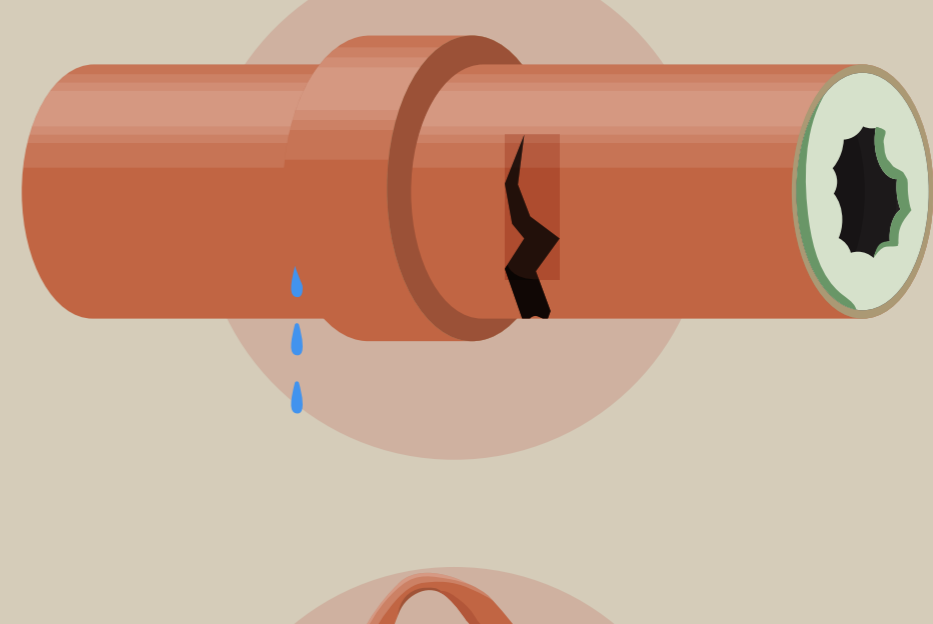
MUNICIPEX IS RESILIENT

MUNICIPEX:

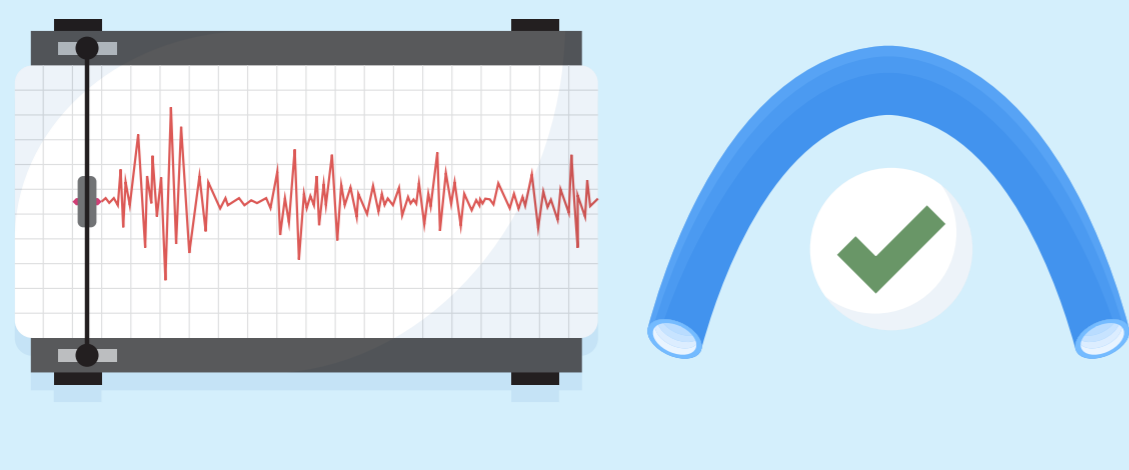


Easy and minimal repair needs

COPPER:



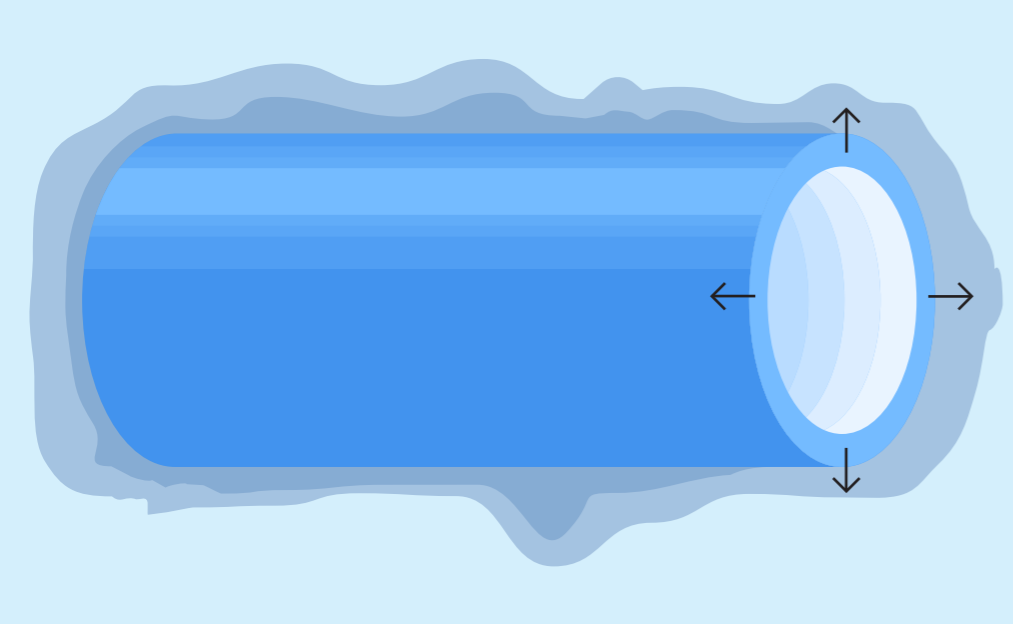
Complicated to repair



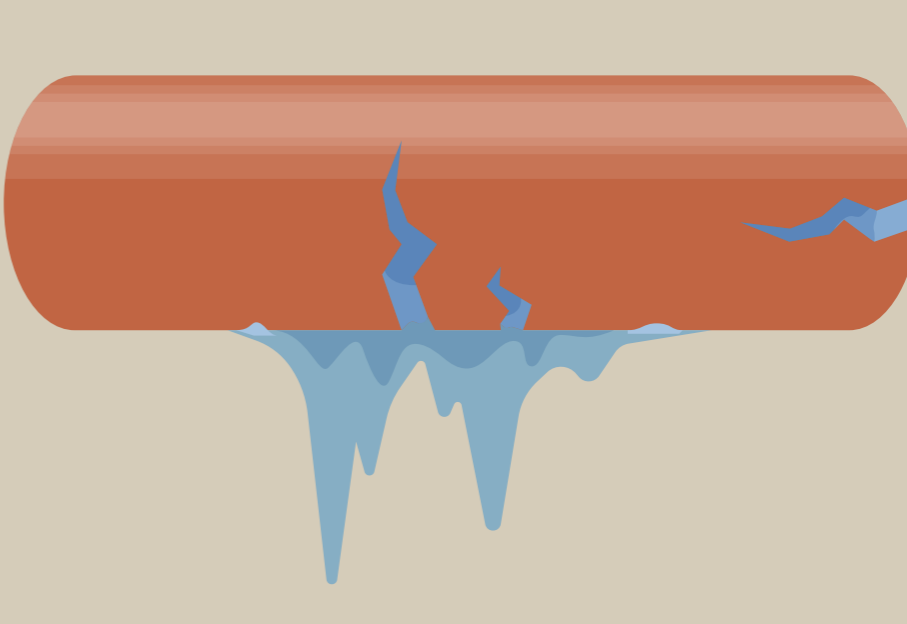
Absorbs and dissipates energy from pressure surges and ground movement



180x more rigid



Expands in cold and freezing temperatures



Splits in freezing temperatures

A long-term, cost-effective alternative to copper, MUNICIPEX provides the quality and durability you need on the job.

Learn more: www.MUNICIPEX.com

SOURCE: "Life Cycle Inventory of the Production of Plastics Pipes for Use in Three Plumbing Applications," Franklin Associates, 2008. https://www.ppfahome.org/pdf/Peer_Reviewed_Pipe_Use_Phase_Report_combined_Final.pdf