



Engineering progress
Enhancing lives

Lay a refined foundation

Inspired by film noir, RAUVISIO noir's self-healing surface lays a base for timeless elegance.

na.rehau.com/noir



RAUVISIO noir™ monotonic matte surface is irresistibly lush and leaves nothing to chance by obscuring fingerprints and scratches. Linger with the visual and tactile sensations of seamless matte from every angle.

The world after dark

RAUVISIO noir blends elegance and craftsmanship with the modern contours of cosmopolitan life. Its monotonic matte finish lays a refined foundation for opulent designs to create the perfect balance of beauty and resilience.

Features & Benefits

- Irresistibly soft touch finish
- Deeply light-absorbent
- Seamless matte from every angle; front, back and edge
- Fingerprint, impact and scratch resistant
- Bacteria, mold and stain resistant
- Suitable for contact with food
- Independent thermal healing of microscratches
- Anti-microbial, ultra-low in VOCs and phenol-free
- Double-sided finished panel or cabinet door
- Matching floating shelves

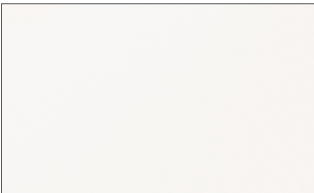


Colors that suit all your needs.

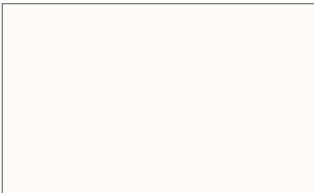
Inspired by the mystique of the cinematic film genre, **RAUVISIO noir** transports your imagination and senses to worlds of the past with its rich low-key colors. Take a stroll down a gaslit boardwalk, embrace the ambiance of a candlelit dinner, merge minimalism with classic panache to provoke jealous gazes. Choose the line designers identify as the embodiment of elegance: **RAUVISIO noir**.



Maltese Mist 154704



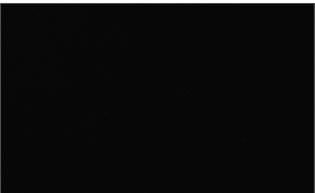
Casa Blanca 154705



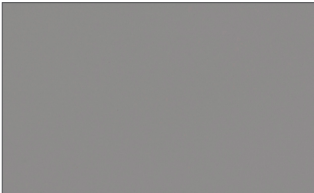
Capital Starlit 154706



High Low 154707



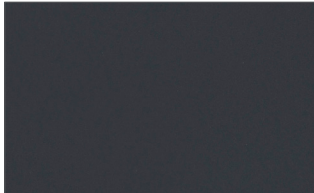
After Dark 154708



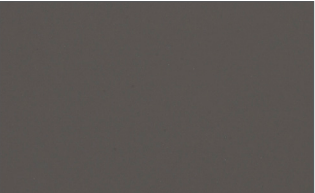
Silver Lake 154709



Smoke Stack 154710



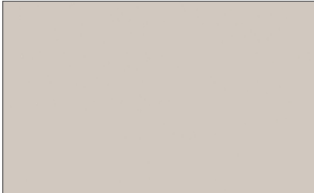
Gaslit Alley 154712



Trench Coat 154711



Midnight Dash 154713

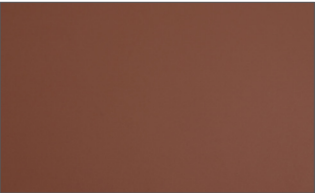


Boxcar Blonde 154714



Olive Detour 154715

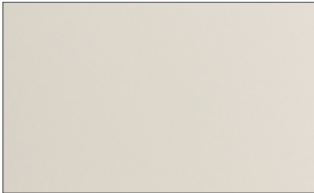
NEW! RAUVISIO noir in color



Sierra Social 155000



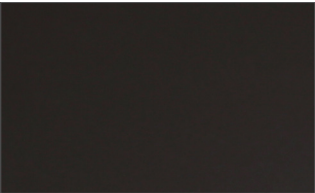
Gimlet Haze 155064



Platinum Sands 155001



Taupe Farewell 155063



Decoy Dusk 155065



Forged in Italy with the finest materials, RAUVISIO noir monotonic matte surface retains all of its elemental properties while delivering unwavering resilience and richly uninhibited elegance. The deeply light-absorbent surface independently heals micro-scratches. Ultra-low in VOCs and phenol free, it minimizes chemicals indoors, while its antimicrobial and hydro-repellent properties make it suitable for food contact.

RAUVISIO noir is offered as laminates, boards and edgeband or fabricated panels and cabinet doors. Panels and doors are crafted of an MDF or particle board core and finished with REHAU LaserEdge™ for a monolithic effect that rivals a solid surface. This versatile matte is also available in the RAUVISIO noir compact, a 12 mm thick solid-core panel for vertical and horizontal applications. With intensely rich hues and real-world grit, this understated surface lays a refined foundation for even the most exuberant design.



What is monotonic matte?

A monotonic matte surface has the ability to retain all of its elemental properties while delivering unwavering resilience, reliability and richly uninhibited elegance in a variety of different scenarios giving you the quality you deserve with the versatility you desire.

The deeply light-absorbent surface withstands scratches and fingerprints while providing the deepest, touchable matte.

RAUVISIO noir technical information

Profile specifications

Appearance	Super-matte
Door style	Slab, siena and shaker
Design style	Modern, contemporary
Construction	PVA laminated face and back, REHAU LaserEdge
Shaker stiles and rails	3 in (76.2 mm), custom widths also available
Face material	Super-matte monotonic laminate, multiple colors
Back material	Super-matte monotonic laminate, matching colors
Edgeband	REHAU LaserEdge, matching color
Core	MDF or particle board
Board thickness	3/4 in (19.5 mm)

Cabinet door size parameters

Minimum slab	3 x 5 in (76.2 x 127 mm)
Maximum slab	50 x 119 in (1270 x 3022.6 mm)
Minimum shaker	8-7/8 in W x 11 in H (225.4mm W x 279.4mm H)
Maximum shaker	30 in W x 65 in H (762 mm W x 1651 mm H)
Minimum siena	11 in W x 6 in H (279.4 mm W x 152.4 mm H)
Maximum siena	50 in W x 60 in H (1270 mm W x 1524 mm H)

Edgebanding profile

Top edge	1.0 mm radius
Bottom edge	1.0 mm radius
Edgeband finish	Elegant matte, color matched

Accessory products

1/4 in. thick components	Cut-to-size with raw edges
Integrated handle	1 17/64 and 5/64 in (32 and 2 mm)
Floating shelves	22 to 96 in (558.8 to 2438.4 mm) wide

Board specifications

RAUVISIO noir is laminated to a high-quality engineered MDF or particle board core that is CARB2, TSCA Title VI certified and NAF (non-added formaldehyde) exempt.

Edgeband specifications

All components are edgebanded with REHAU LaserEdge, which provides an extremely heat and moisture resistant seamless joint and creates a matte solid surface look.

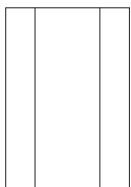
Cleaning and care

Clean with a damp microfiber cloth and mild soap if needed. RAUVISIO noir is resistant to most chemicals and solvent-based cleaners, but harsh chemicals should be avoided. Do not use brushes or scouring pads. REHAU is not responsible for any damage done by abrasive cleaning products or procedures.

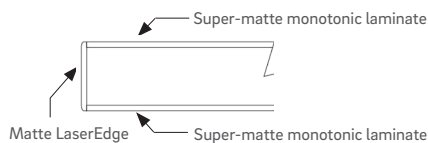
Protective coat

A protective peel coat is applied to the top and bottom surfaces. To remove peel coat, use rubber fingertips or our peel coat removal tool.

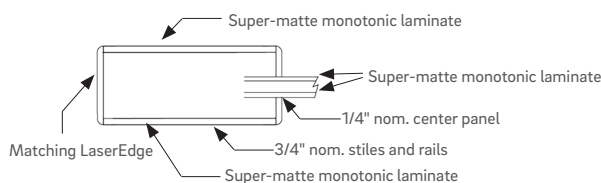
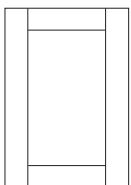
Siena profile



Slab profile



Shaker profile



Learn more & request a sample: na.rehau.com/noir

Customer Service Contacts

Hours Monday to Friday, 8 am to 6:30 pm EST

Email orders.us@rehau.com

www.na.rehau.com/cabinetdoors

United States

Phone (888) 734-2810 Fax (616) 285-7622

Canada

Phone (888) 905-0345 Fax (514) 905-0490

For updates to publication, visit na.rehau.com/resourcecenter

The information contained herein is believed to be reliable, but no representations, guarantees or warranties of any kind are made as to its accuracy, suitability for particular applications or the results to be obtained therefrom. Before using, the user will determine suitability of the information for user's intended use and shall assume all risk and liability in connection therewith.

© 2030 REHAU

100.759 en 01.2023