



Fairfield
INN & SUITES
BY MARRIOTT

Clearance 12'-0"

**Engineering progress
Enhancing lives**

Fairfield Inn & Suites Harrisburg International Airport

In it for the long haul with PEXa plumbing and solid EVERLOC+® connections.

www.everlocplus.com



EVERLOC+ compression-sleeve fitting system supports hotel's long-term investment strategy

Fairfield Inn & Suites at Harrisburg International Airport (HIA) is a 123-room, Marriott-branded property located directly adjacent to Pennsylvania's third largest airport. With gate areas only a short walk away, the hotel is a welcome addition to the airport, which serves more than 1.2 million travelers each year.

Employing a long-term investment approach with its 51+ properties, owner/operator Shaner Hotels doesn't compromise on quality. Vice president of design and construction, Bill Hoy needed to ensure the building systems he specified would last long past the sparkle and excitement of the hotel's grand opening.

"We don't build and sell our properties; we're in it for the duration. When it comes to building systems, the cheaper alternatives can really hurt long-term profitability," Hoy said. "That's why we chose REHAU PEXa plumbing systems for this property."

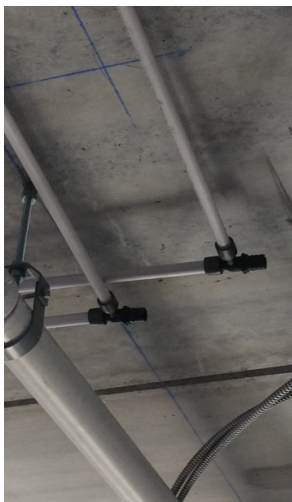
Moving away from copper piping

According to Hoy, in addition to its strength and durability, a main reason for choosing the REHAU PEXa plumbing system is that Shaner Hotels is steering away from copper plumbing in their properties. "We really want to avoid the higher risk of leaks, corrosion and build-up inside copper pipe that can happen over time," he said. "With RAUPEX plumbing pipe and EVERLOC+ fittings, we're not worried about long-term performance issues, and the plumbing contractor was happy with the smooth installation process."

Darrin Fahnestock, commercial plumbing manager at Brubaker, agreed. During his 23 years at Brubaker, he has had experience with many large commercial installations using various types of materials. "Even though this was our first time using the REHAU PEXa plumbing system, we were able to get started relatively quickly once we arrived on the job site. The EVERLOC+ system didn't take much time to master; all of the components are designed to work together to create solid connections," he said.

Compared to a similar-size copper installation, Fahnestock says the REHAU PEXa installation went much faster.

"It was easier to get the pipe routed, connections were made quickly and I felt very confident that the system was solid and secure once we were finished," Fahnestock said.



Project: Fairfield Inn & Suites, Harrisburg International Airport
Location: Harrisburg, PA
Construction type: Hotel
Project scope: 6,100 ft (1,859 m) of RAUPEX plumbing pipe
Architect: Baskervill
Developer: Shaner Hotels
General contractor: Level Design Bild
Mechanical Contractor: Brubaker, Inc.
REHAU systems used: PEXa plumbing system (RAUPEX® pipe, EVERLOC+® compression-sleeve fitting system)

For updates to this publication, visit na.rehau.com/resourcecenter

The information contained herein is believed to be reliable, but no representations, guarantees or warranties of any kind are made as to its accuracy, suitability for particular applications or the results to be obtained therefrom. Before using, the user will determine suitability of the information for user's intended use and shall assume all risk and liability in connection therewith.

© 2021 REHAU 855.958 04.2021