

TECHNICAL BULLETIN 276

REHAU F1960 Polymer Fitting Chemical Compatibility



Product: REHAU F1960 polymer fitting chemical compatibility

Date: 05 December 2022

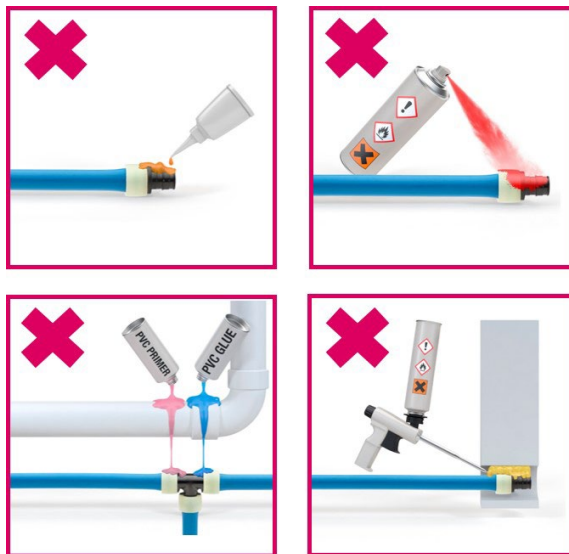
REHAU F1960 polymer compression-sleeve fittings utilize both Acudel[®], a modified polyphenylsulfone (PPSU), and Radel[®], a polyphenylsulfone (PPSU), developed and produced by Solvay Plastics. Both PPSU materials used to produce the REHAU F1960 polymer fittings are a high-performance polymer material designed for use in potable and hydronic water applications with more than 20 years of experience in the North American market.

Extensive research and testing has been performed by Solvay Plastics on the quality and durability of their PPSU materials when used in North American potable and hydronic piping systems and is available at www.solvayplastics.com.

When specifying and installing potable and hydronic piping systems, the engineer, installing contractor and building owner should ensure a complete understanding of the materials and sources of materials being used in their project. There are chemicals that can damage PPSU which may lead to a reduced lifetime of the material. This applies when the fitting is exposed to chemicals both externally and internally during the transport of such chemicals.

Chemicals that may damage polymer fittings made from PPSU materials include but are not limited to:

- Adhesives and adhesive tapes
- Oil/petroleum-based products
- Paints
- Solvents
- Firestop caulk
- Oxidizing agents
- Disinfectants
- PVC glues, solvents and cements
- Expandable polyurethane foams
- Leak detection liquids



It is the responsibility of the installing contractor to verify compatibility of any chemicals that come into contact with the PPSU fittings. In addition, the installing contractor should ensure that other trades on the job site do not allow external chemicals to come into contact with the PPSU fittings. If it is required to protect the fittings, use only REHAU recommended protective tapes for wrapping of REHAU F1960 joints.

REHAU F1960 polymer fittings exposed to chemicals, aggressive or corrosive water or any external influences that cause damage to the REHAU F1960 polymer fittings are not covered by the REHAU *PEXa Limited Warranty*.

For updates to this publication, visit na.rehau.com/resourcecenter

The information contained herein is believed to be reliable, but no representations, guarantees or warranties of any kind are made as to its accuracy, suitability for particular applications or the results to be obtained therefrom. Before using, the user will determine suitability of the information for user's intended use and shall assume all risk and liability in connection therewith.

© 2022 REHAU