

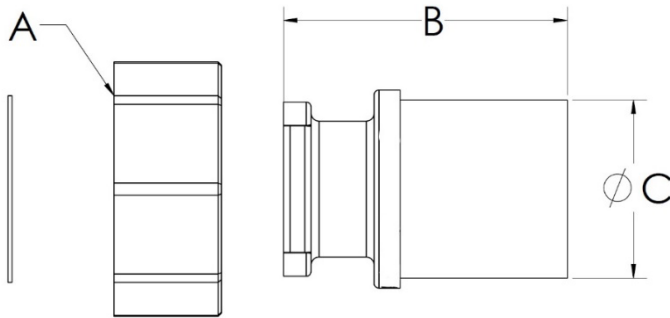
PRODUCT SUBMITTAL 223

PRO-BALANCE Manifold Adapter, BSPP to Copper Press



Product: PRO-BALANCE® Manifold Adapter, BSPP to Copper Press

Date: 15 April 2023



Article No.	Nominal Size	A	B in (mm)	C in (mm)
343228-001	1 in. BSPP x 1 in. copper press	1 in. BSPP thread	1.800 (45.72)	1.125 (28.58)
343234-001	1 1/4 in. BSPP x 1 1/4 in. copper press	1 1/4 in. BSPP thread	2.070 (52.58)	1.375 (34.93)

TECHNICAL DESCRIPTION

Material	Brass with fiber gasket
----------	-------------------------

FUNCTIONAL DESCRIPTION.

REHAU BSPP to copper press adapters are designed specifically for use with REHAU PRO-BALANCE® manifolds. These adapters connect directly to the PRO-BALANCE manifold supply/return header with a BSPP threaded connection (using the included fiber gasket) and transition to copper pipe using a copper press or solder connection.

When soldering, the adapter must be soldered onto the copper pipe first. Allow the solder joint to cool to ambient room temperature prior to installing the fiber gasket and making the BSPP connection to a PRO-BALANCE manifold. Never solder after the BSPP connection with fiber gasket has been made.

For updates to this publication, visit na.rehau.com/resourcecenter

The information contained herein is believed to be reliable, but no representations, guarantees or warranties of any kind are made as to its accuracy, suitability for particular applications or the results to be obtained therefrom. Before using, the user will determine suitability of the information for user's intended use and shall assume all risk and liability in connection therewith.

© 2023 REHAU