



Engineering progress
Enhancing lives

RAUVISIO riviera

The acrylic gloss & matt laminates





RAUVISIO riviera

Experience the fine living





Matt elegance

Upgrading design elements and fulfilling demanding requirements for modern aesthetics, by showcasing design elements in eye-catching ways.





High gloss sheen

Mirror-gloss finish combined with inspiring color brilliance, coupled with exceptional durability, provides shining results.



RAUVISIO riviera

Experience the fine living

Introducing Riviera, the premium laminate that brings the vibrant essence of tropical beauty into your home. Available in both high-gloss and matt finishes, riviera offers a luxurious high gloss and super matt appearance that enhances furniture fronts and surfaces.

Inspired by the fresh, exotic flavors of coastal landscapes, this laminate delivers exceptional color quality, depth, and brilliance. It's the perfect choice for creating sophisticated furniture pieces that truly stand out.

Riviera's versatility and superior surface quality make it ideal for contemporary living spaces, ensuring a flawless look that aligns with the latest trends in furniture and interior design.

Elevate your interiors with riviera and experience the pinnacle of luxury and style.

Riviera laminates are crafted to minimize environmental impact and are produced entirely within an environmental management system that has been independently certified to ISO14001 standards.



Why Choose RAUVISIO riviera?

RAUVISIO riviera laminate not only brings style and elegance to your interiors but also offers unmatched durability and ease of maintenance.

Usage benefits:

- Color and UV stable
- Easy to clean
- Flexible processing
- Scratch resistant
- Chemical resistant (common household chemicals)

Processing benefits:

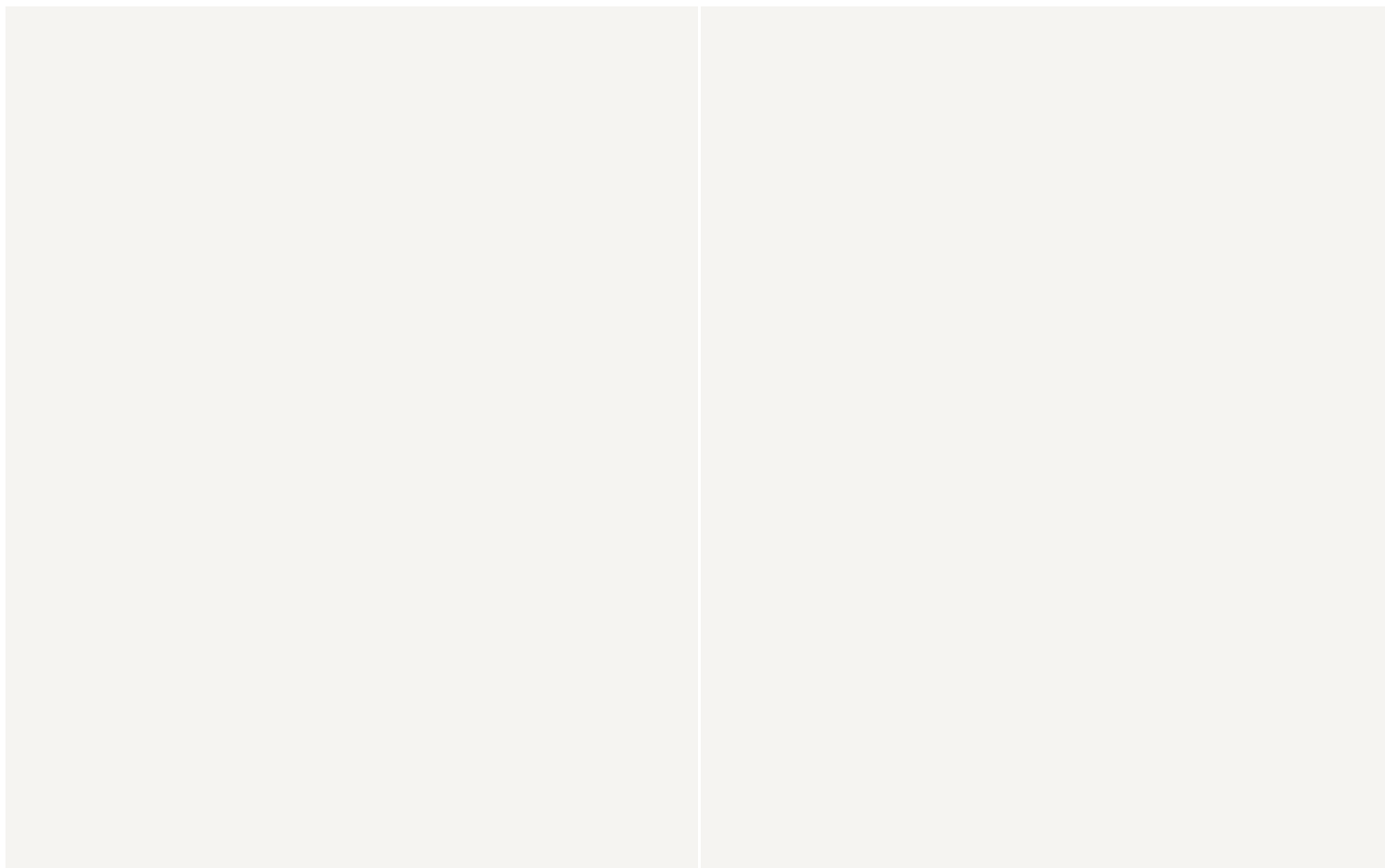
- Can be easily processed using standard woodworking tools
- Lower production cost
- Flexibility to laminate and process acrylic on-site opens up more design opportunities



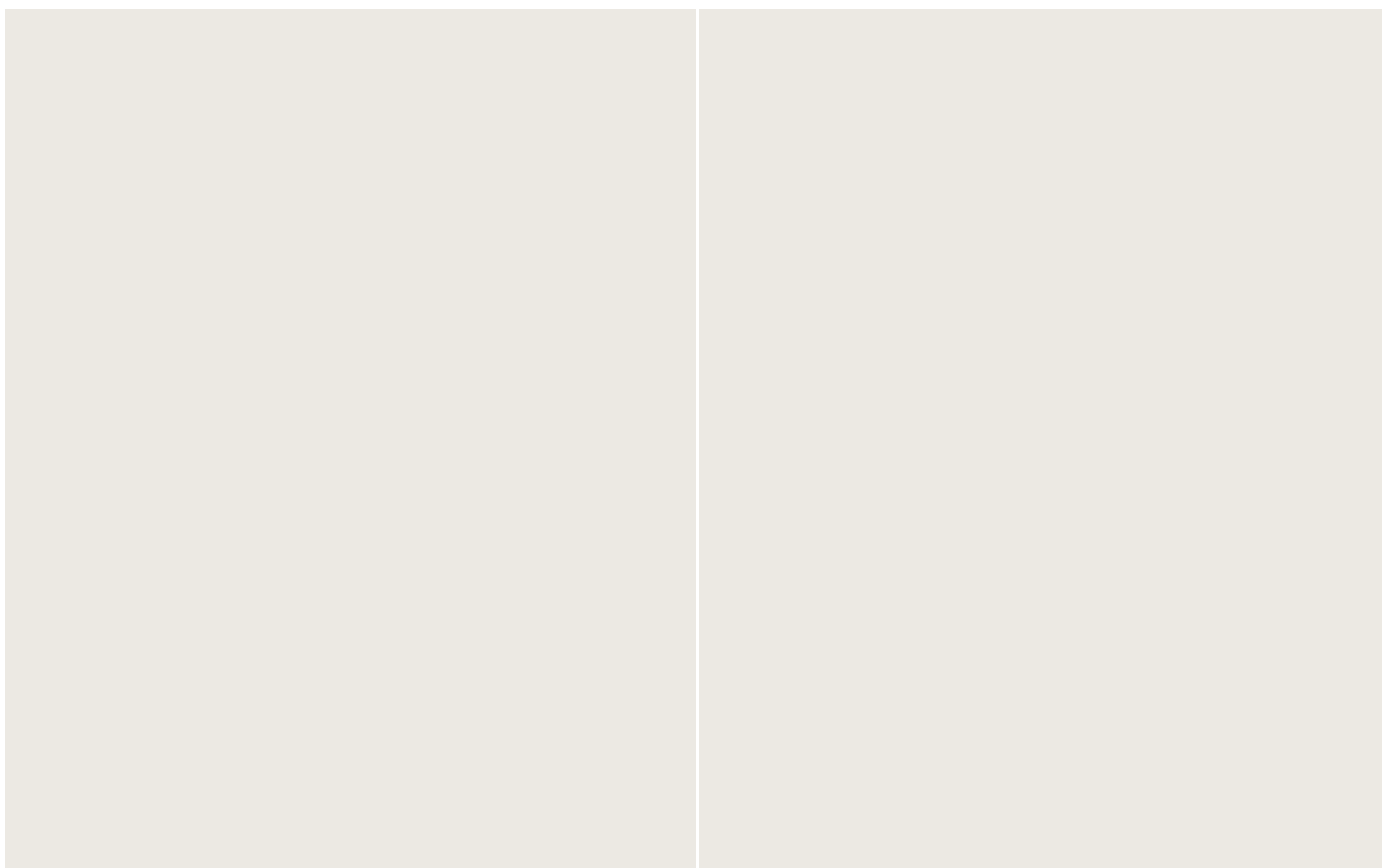


*Image shown above are just for representation purposes only

MARSHMALLOW GLOSS & MATT



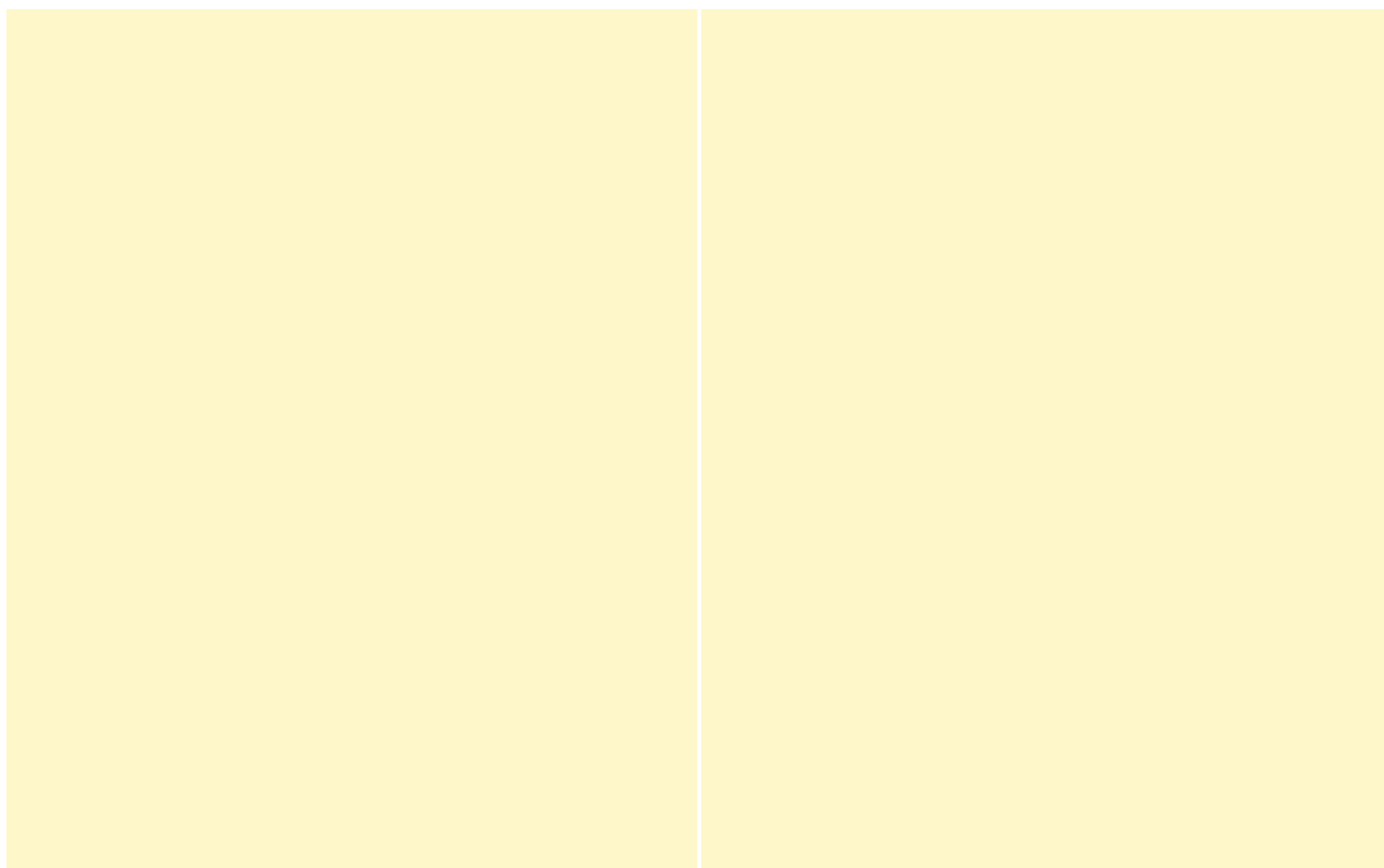
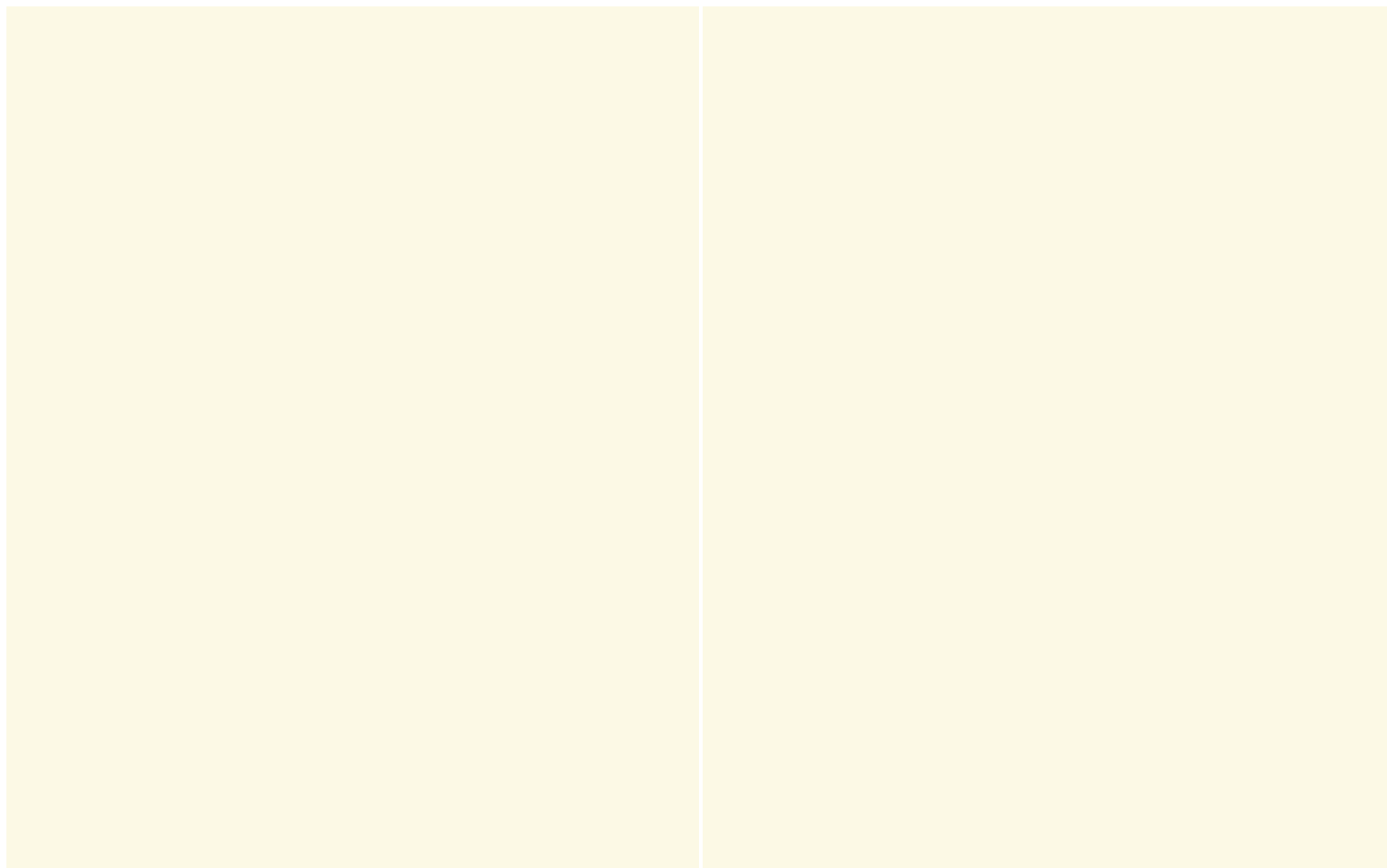
FRENCH VANILLA GLOSS & MATT





*Image shown above are just for representation purposes only

CREME GLOSS & MATT

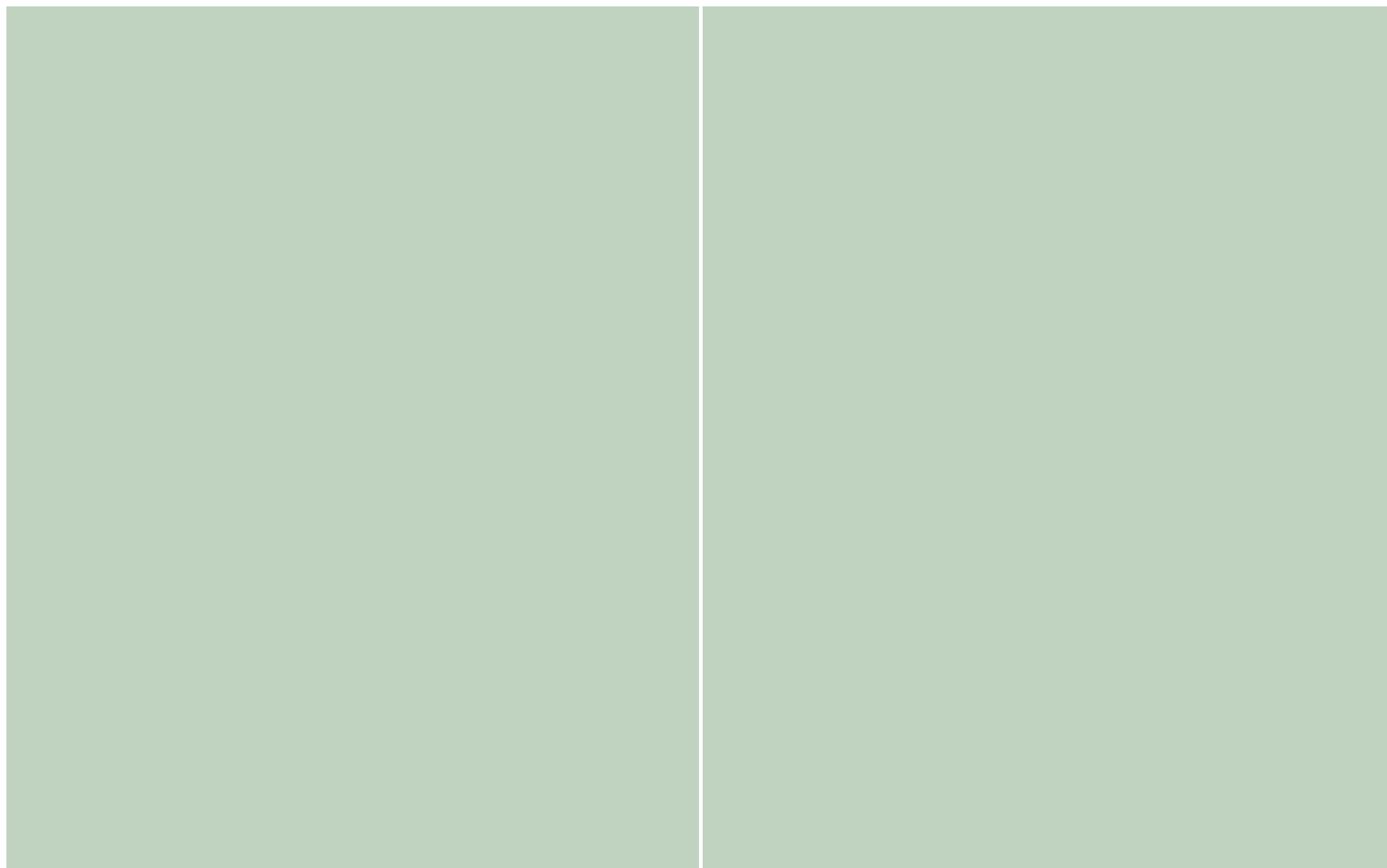


SWEET LATTE GLOSS & MATT

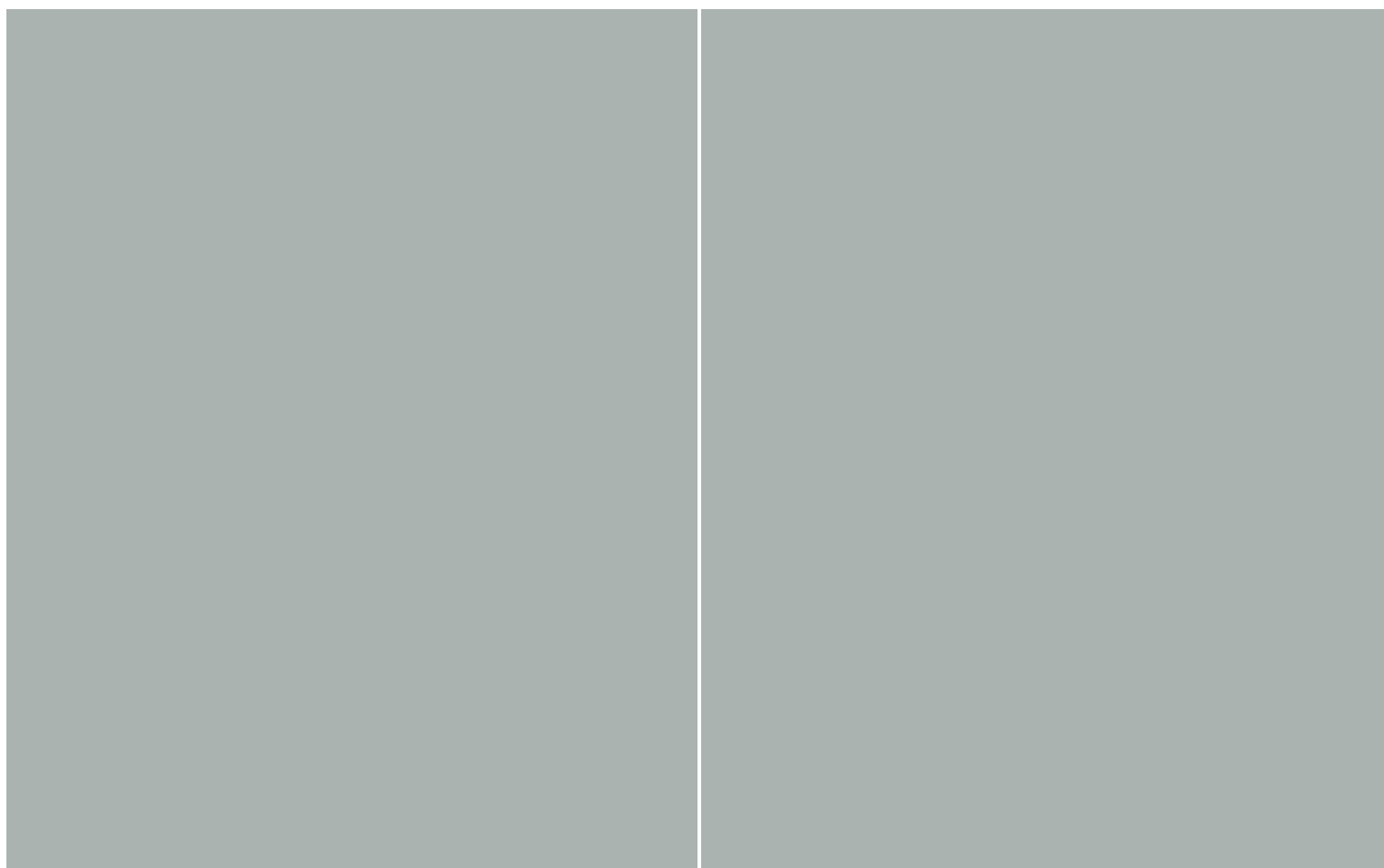


*Image shown above are just for representation purposes only

SEA FOAM GLOSS & MATT



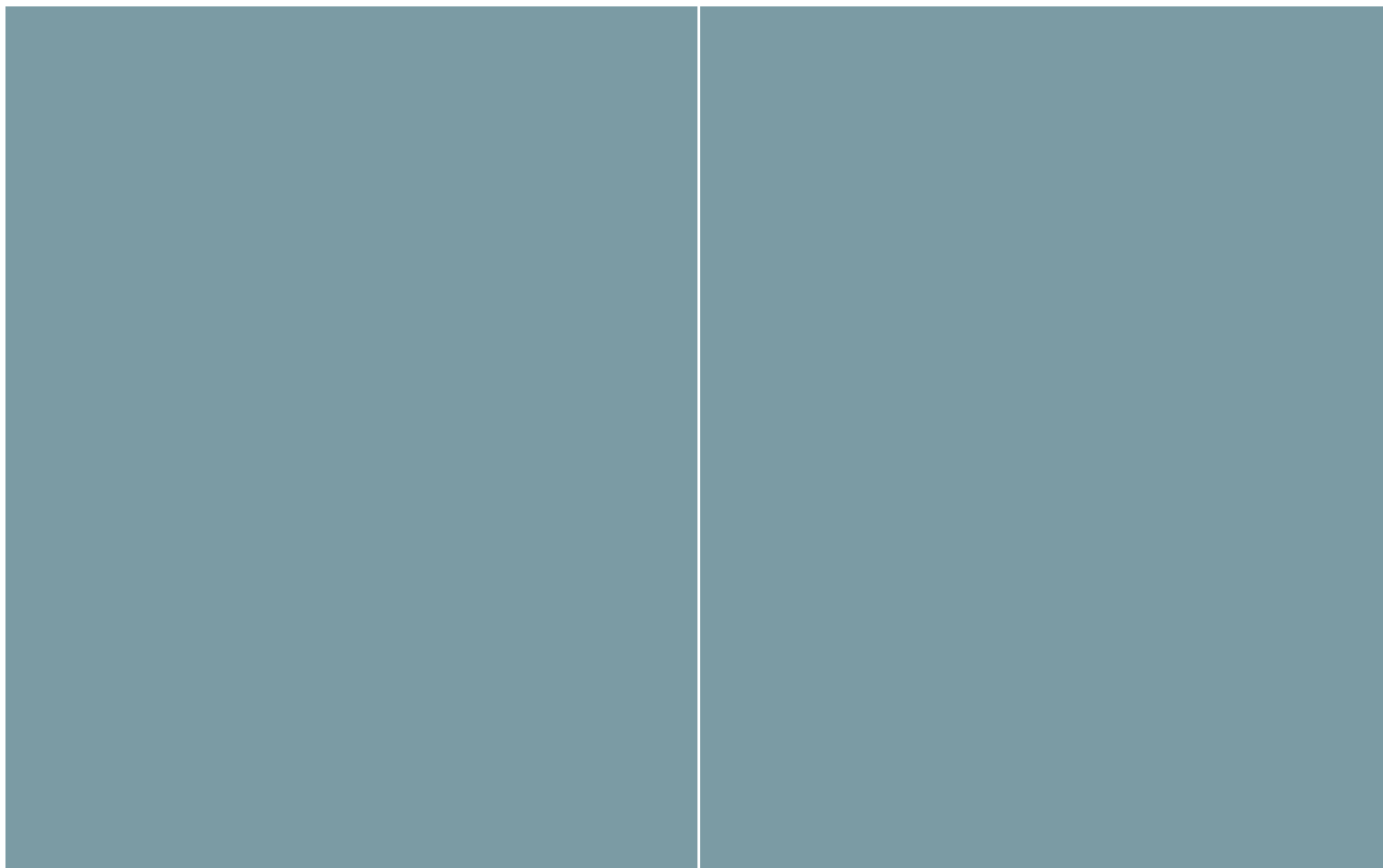
GRAY FLESH GLOSS & MATT



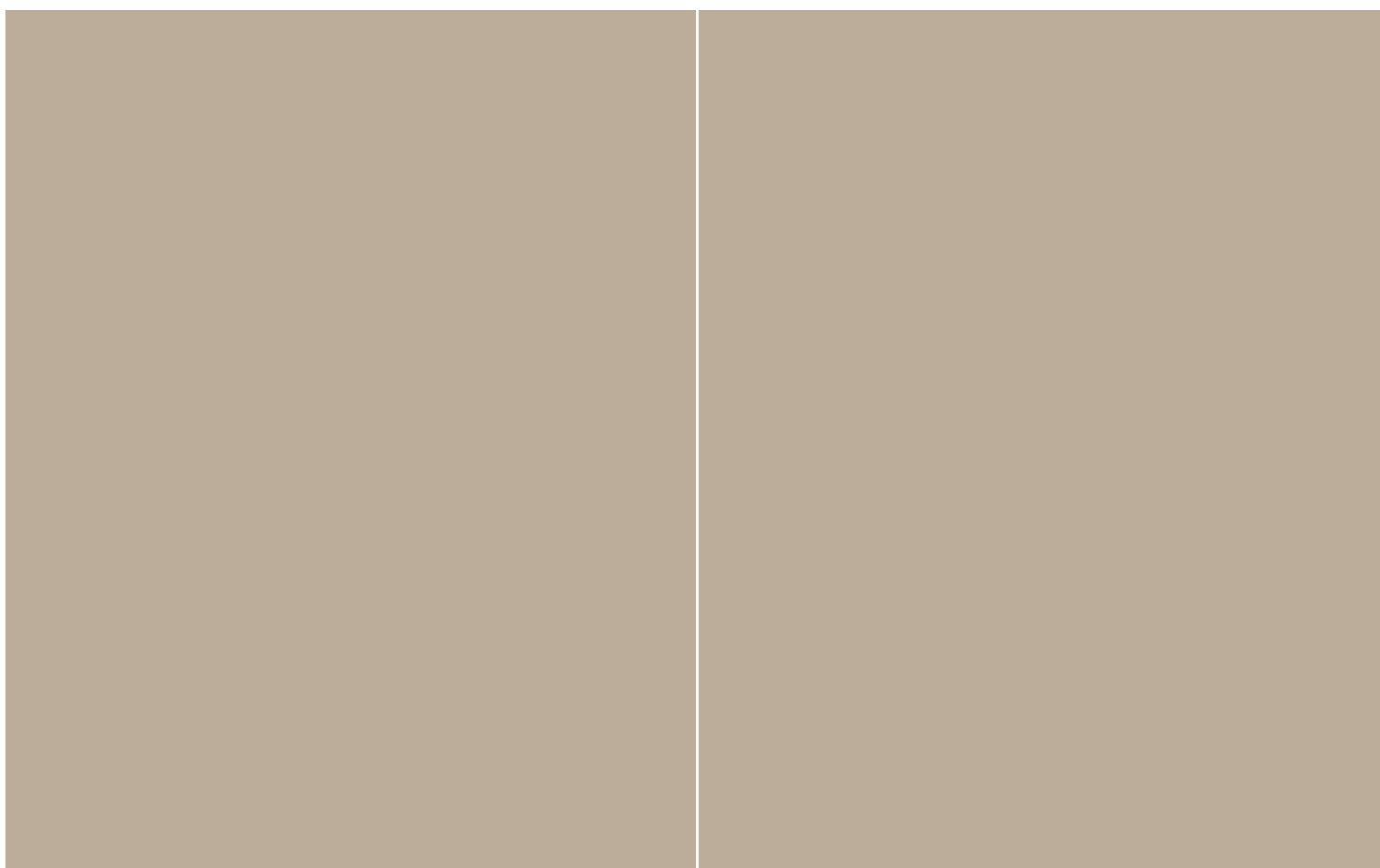


*Image shown above are just for representation purposes only

BLUE SPIRULINA GLOSS & MATT



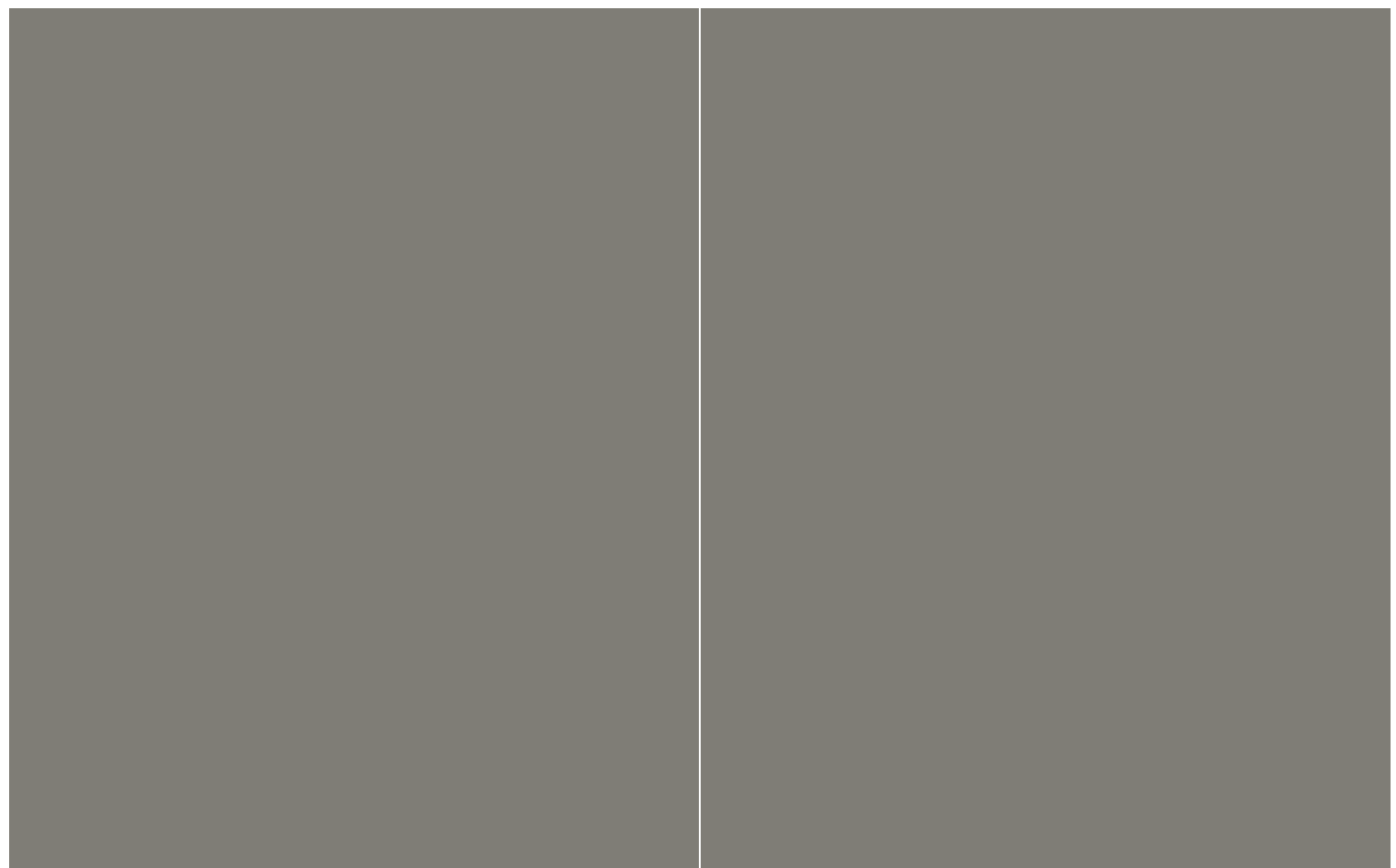
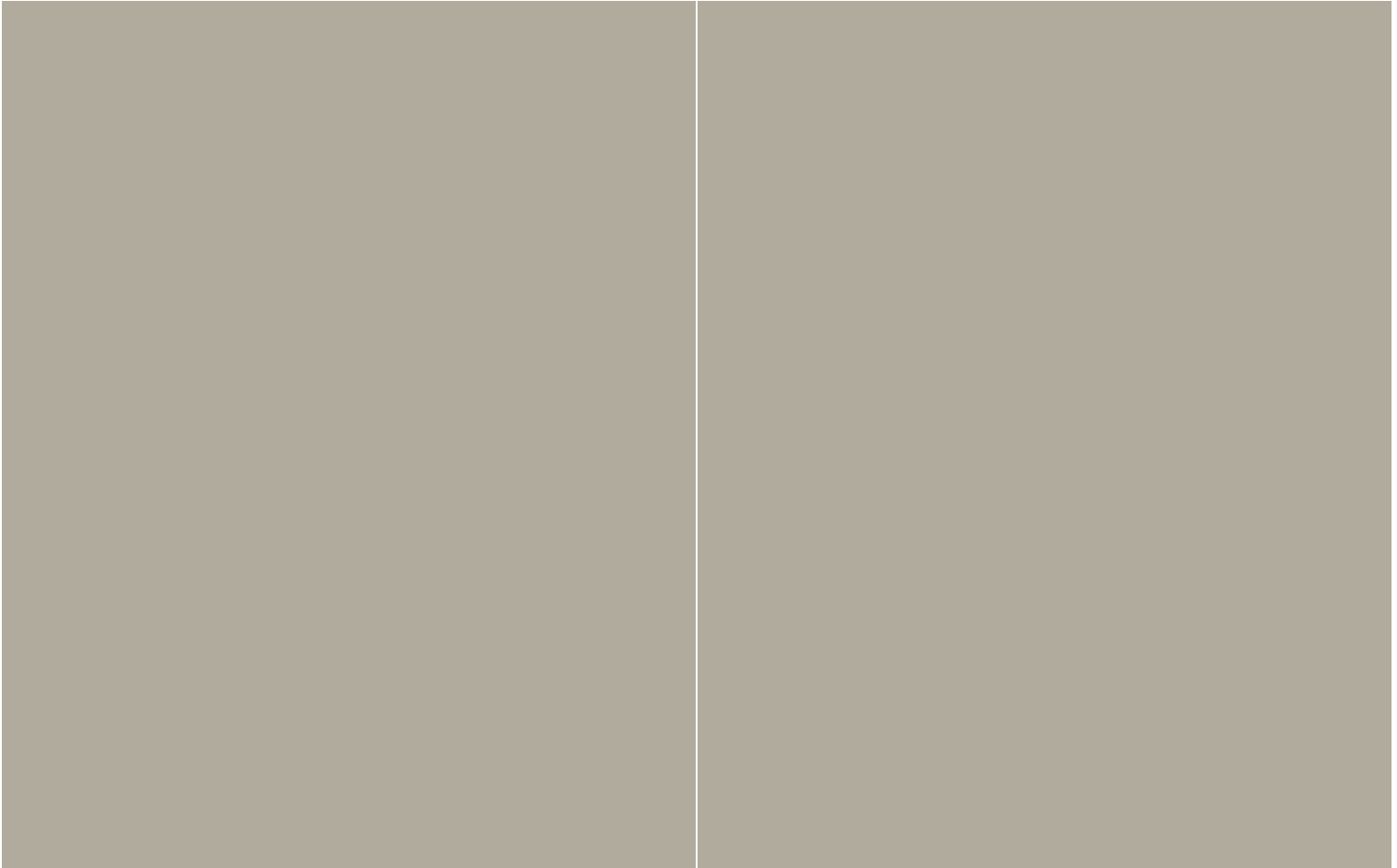
BISCOTTI GLOSS & MATT





*Image shown above are just for representation purposes only

SHIITAKE GLOSS & MATT

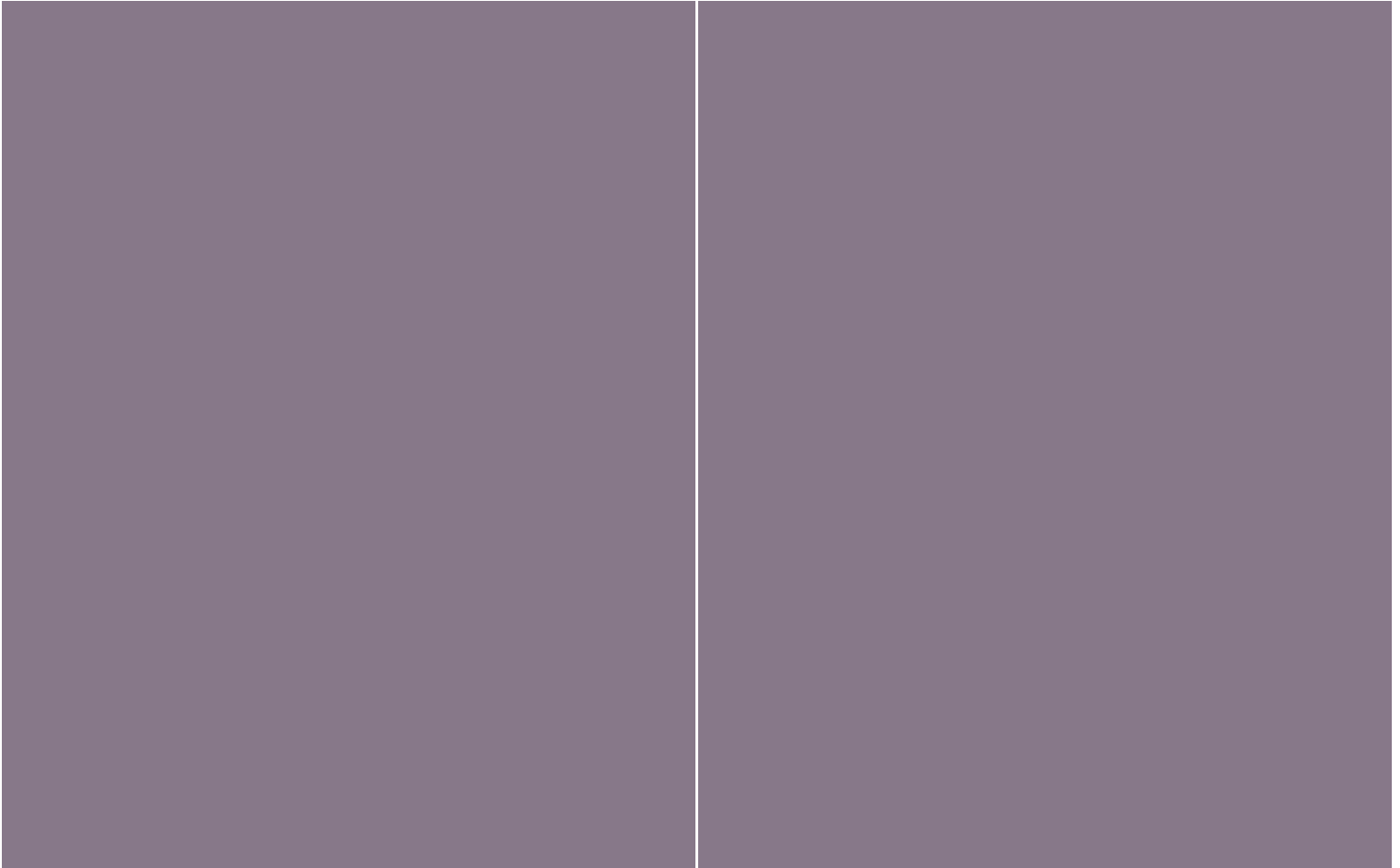


ROASTED CHESTNUT GLOSS & MATT



*Image shown above are just for representation purposes only

PINK OYSTER GLOSS & MATT



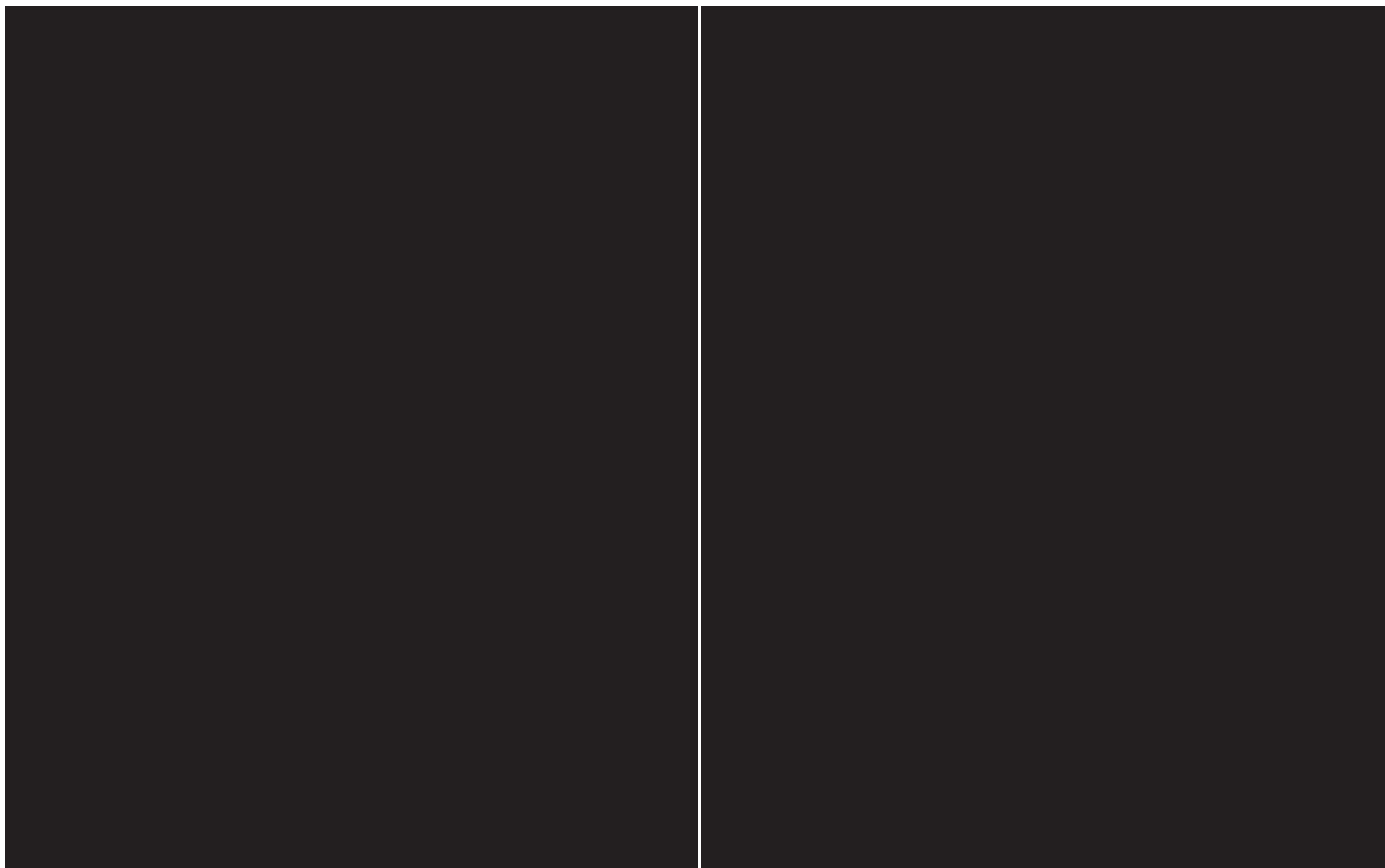
EARL GRAY GLOSS & MATT



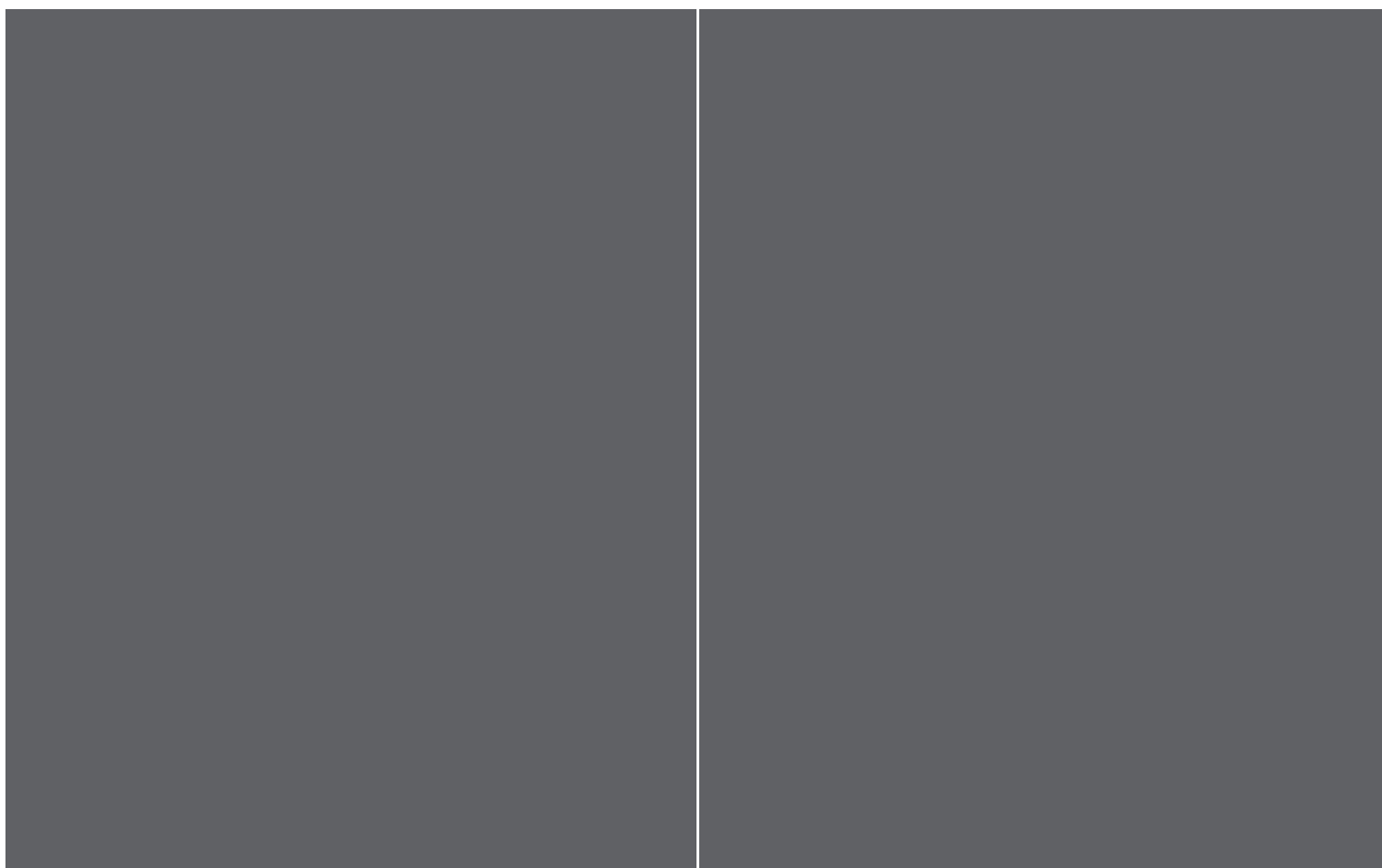


*Image shown above are just for representation purposes only

BLACKBERRY GLOSS & MATT



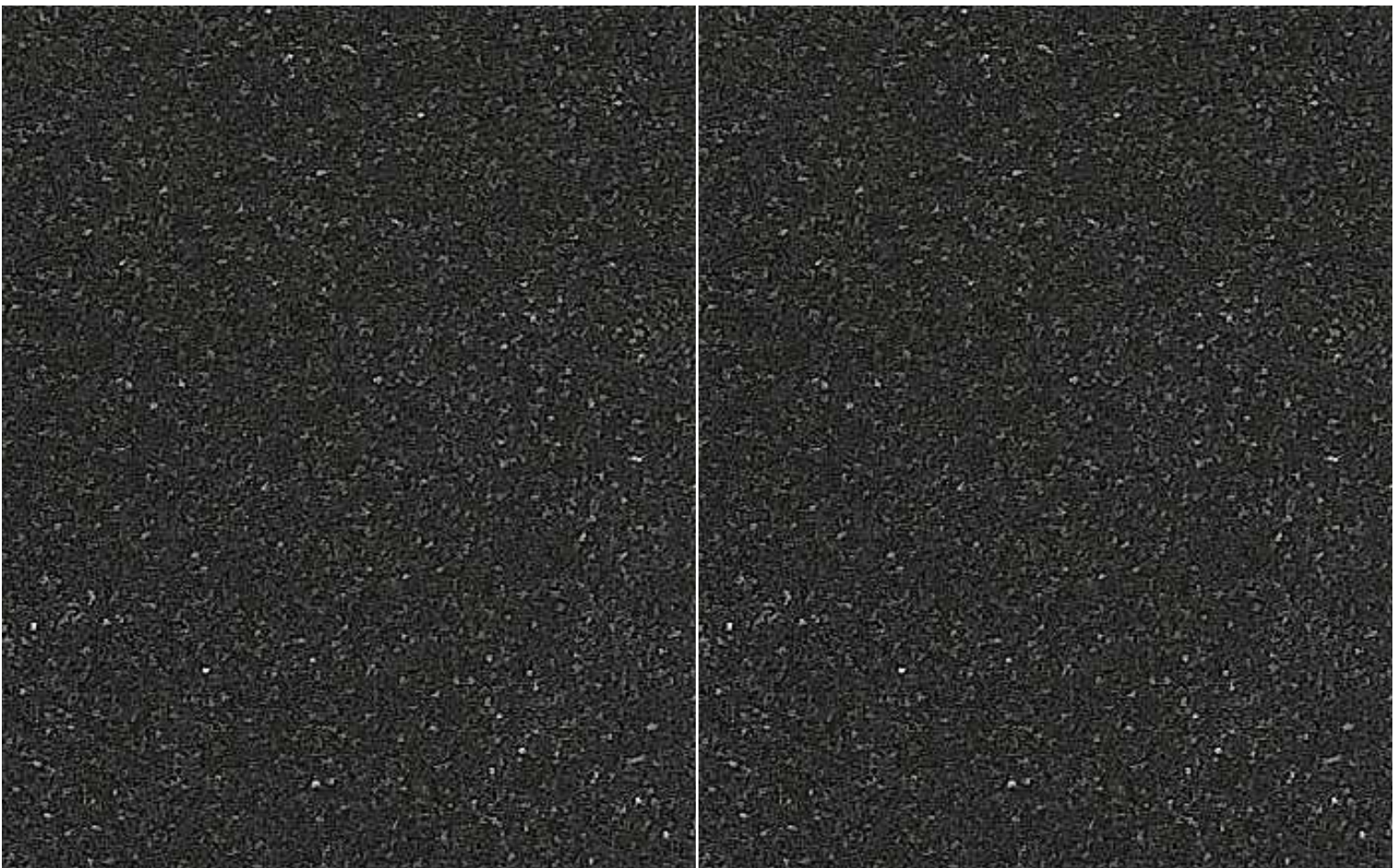
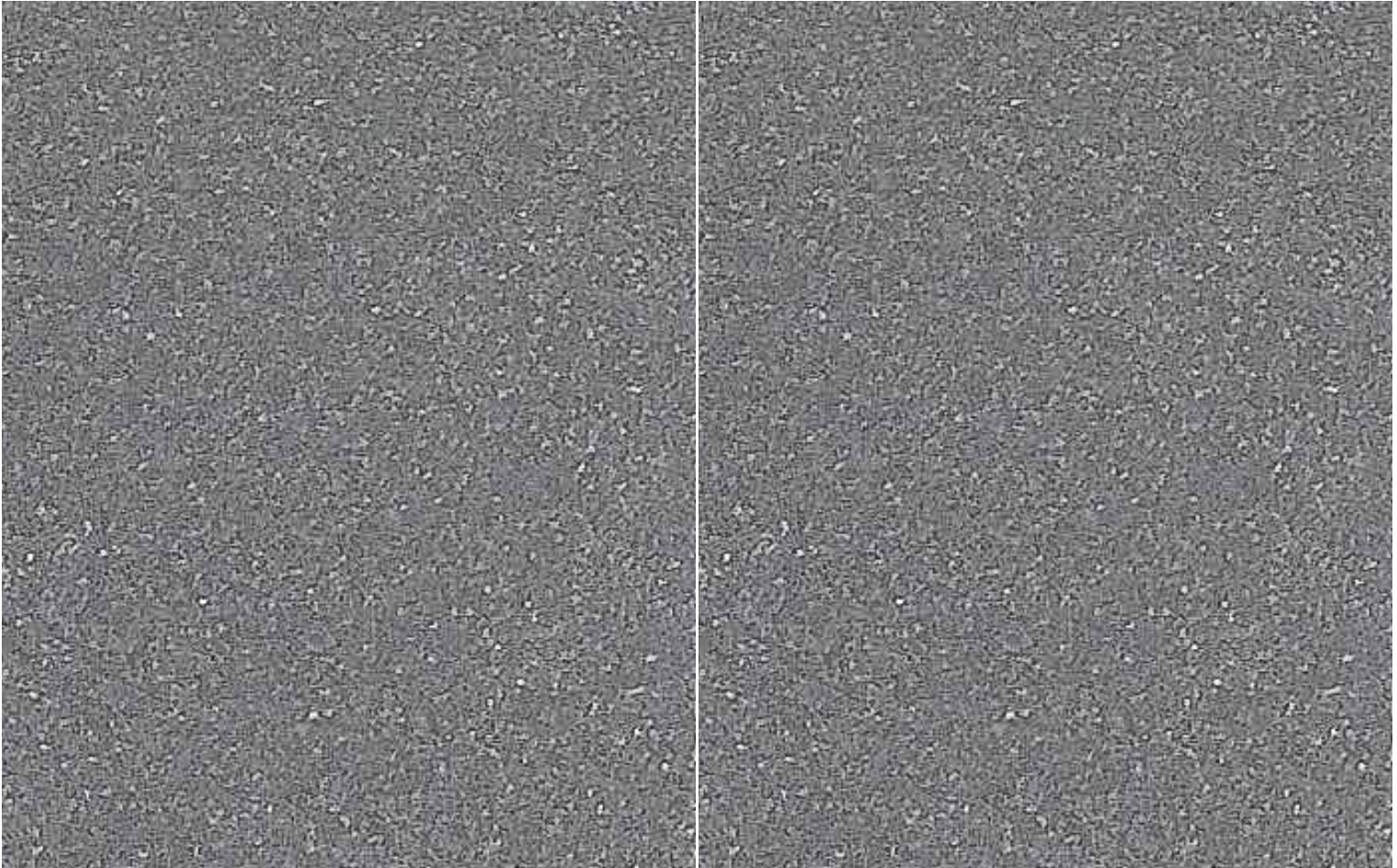
DARK TRUFFLE GLOSS & MATT





*Image shown above are just for representation purposes only

SILVER DUST GLOSS & MATT

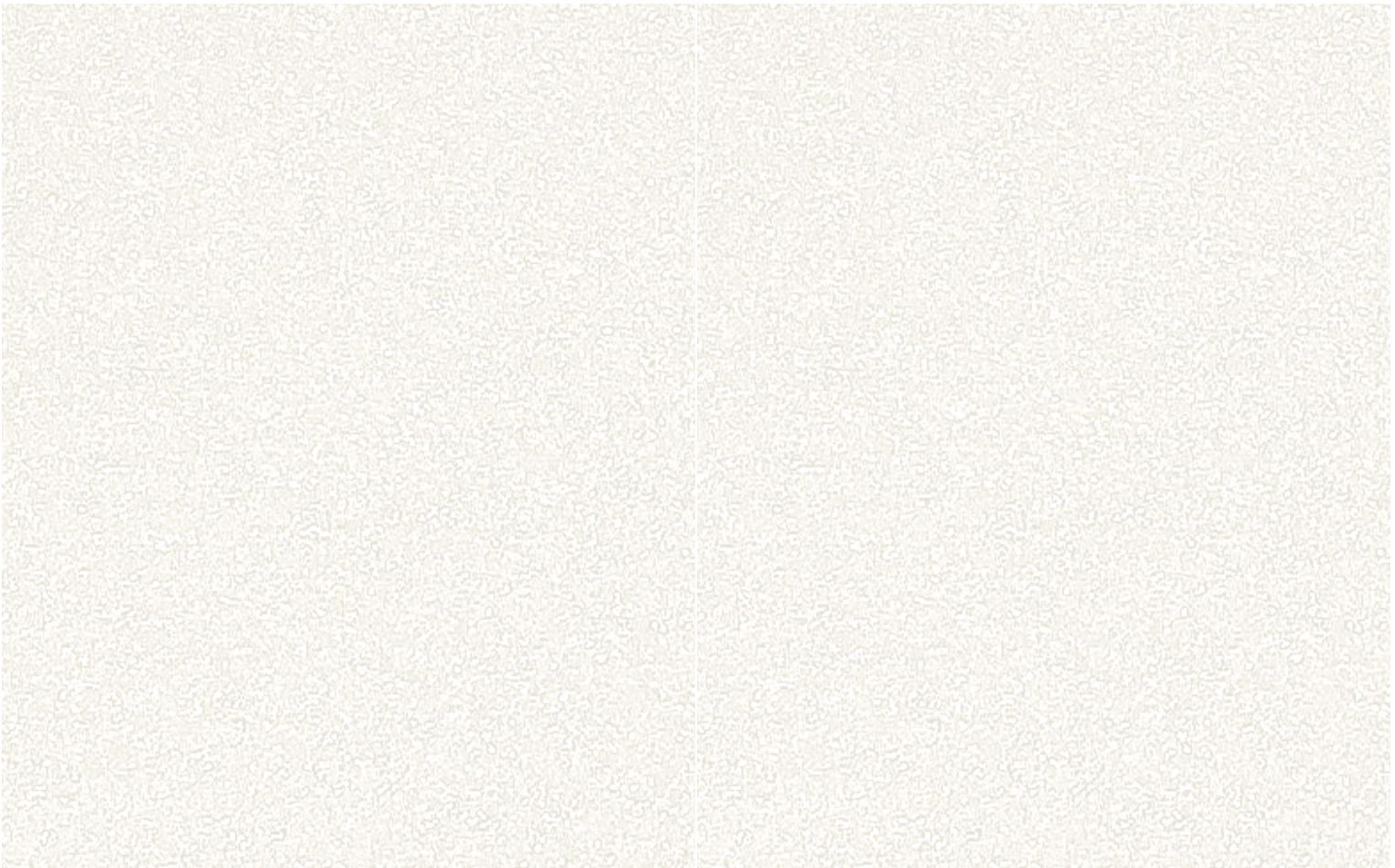


BLACK RICE GLOSS & MATT



*Image shown above are just for representation purposes only

GOLD DUST GLOSS & MATT



AZUCAR GLOSS & MATT

Do's

Clean regularly:

Use a soft damp cloth for regular cleaning. For tougher spots, a mild soap solution is effective.

Wipe spills immediately:

Quickly cleanup any spills to prevent staining

Protecting Surface:

be sure not to remove the protective film until work has been completed

Don'ts

Avoid abrasive cleaners:

Never use cleaning products containing alcohol, solvents, acetone, or glass cleaner as this will only damage the surface

Keep away from heat:

Avoid connection of hot items directly on/to the laminate and keep it away from direct heat sources.

Avoid prolonged sunlight:

Do not expose the laminate to prolonged direct sunlight to prevent fading or warping.

You can ensure that riviera laminate remains in excellent and durable condition for years to come.

Disclaimer:

We provide a manufacturing warranty exclusively for the laminate, covering aspects such as color fastness and application-related issues like bubbles. However, the warranty does not extend to the entire furniture. Rehau Polymer is not responsible for repairing or replacing the furniture in the event of laminate replacement.



TRY OUT FROM THESE STENCILS

This document is protected by copyright. All rights based on this are reserved. No part of this publication may be translated, reproduced or transmitted in any form or by any similar means, electronic or mechanical, photocopying, recording or otherwise, or stored in a data retrieval system.

Our verbal and written advice relating to technical applications is based on experience and is correct to the best of our knowledge, but is given without obligation.

The use of REHAU products in conditions that are beyond our control or for applications other than those specified releases us from any obligation in regard to claims made in respect of the products.

We recommend that the suitability of any REHAU product for the intended application should be checked. Utilisation and processing of our products are beyond our control and are therefore exclusively your responsibility. In the event that a liability is nevertheless considered, any compensation will be limited to the value of the goods supplied by us and used by you.

Our warranty assumes consistent quality of our products in accordance with our specifications and in accordance with our general conditions of sale.

REHAU Experience Centres

NOIDA

REHAU Polymers Pvt. Ltd.
B-7, Amaltash Marg, opposite
Telephone Exchange, Block B, Sector 4,
Noida, Uttar Pradesh 201301, India

BENGALURU

REHAU Polymers Pvt. Ltd.
48, Richmond Road,
Bengaluru - 560025, India
Contact Details: +91 99 7257 7221

MUMBAI

REHAU Polymers Pvt. Ltd.
Raghuvanshi Mills, Senapati Bapat Marg,
Gandhi Nagar, Upper Worli, Lower Parel, Mumbai,
Maharashtra 400013, India
Contact Details: +91 93 2495 2718

REHAU Sales Offices

NOIDA

REHAU Polymers Pvt. Ltd.
B-7, Amaltash Marg, opposite
Telephone Exchange, Block B, Sector
4, Noida, Uttar Pradesh 201301, India

BENGALURU

REHAU Polymers Pvt. Ltd.
48, Richmond Road,
Bengaluru - 560025, India
Contact Details: +91 99 7257 7221

PUNE

REHAU Polymers Pvt. Ltd.
601/602, 6th Floor, Nucleus Mall,
1 Church Road, Camp,
Pune - 411001, Maharashtra, India

MUMBAI

REHAU Polymers Pvt. Ltd.
Office No. 1101, 11th Floor,
Meraki Arena, Motibag Compound,
CTS No. 667A/2A, 667A/2B, 667A/2C & 667A/2D of Village Borla,
V.N. Purav Marg, Opp. R.K. Studio, Sion-Trombay Road,
Chembur (E), Mumbai – 400071, (INDIA)

Email: customercare_india@rehau.com • Toll Free No.: 1800 2100 011

Follow REHAU India:    

Download **REHAU India App** at  



www.rehau.co.in