

PEX 1 1/2 Inch PEXa 3306 261116 CTS SDR9 POTABLE TUBING AWWA C800 ASTM F8

CTS SDR9 POTABLE TUBING AWWA C800 ASTM F

ft REHAU MUNICIPEX 1 1/2 Inch PEX
HAU MUNICIPEX 1 1/2 Inch PEXa 3306 26111

Engineering progress
Enhancing lives

Stand proud in your legacy with **MUNICIPEX.**

Make your mark with time-honored,
proven piping systems that stand up
to today's challenges and are built for
a better future. www.municipex.com







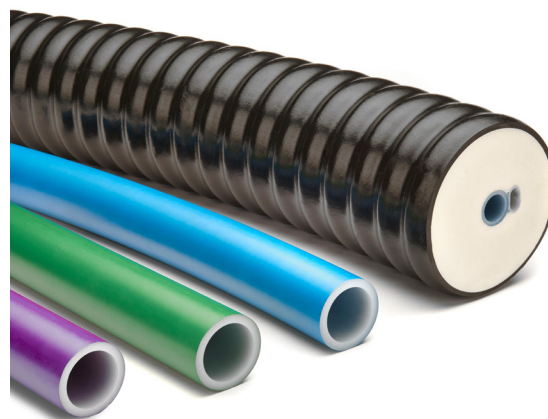
MUNICIPEX[®]

Flexible piping for municipal applications

As you choose municipal piping materials, the well-being of your community is in your hands. Make your mark with time-honored, proven systems that stand up to today's challenges and are built for a better future.

Our high-performance line of flexible municipal piping gets your crew in and out of trenches quicker than traditional piping materials. Engineered for tough environments, MUNICIPEX is resistant to corrosion, impact and mineral build-up.

Optimize performance with MUNICIPEX water service, force main, pre-insulated and reclaim pipe to build systems that serve generations.



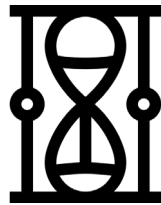
Proven performance benefits

With an aging municipal infrastructure, changes in quality, treatment practices and maintenance pose difficult challenges for suppliers, municipalities and residents. Unlike other municipal piping that needs to be replaced frequently, MUNICIPEX is resistant to common field problems and provides proven performance benefits.



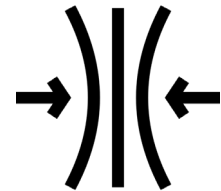
Get your crew in and out of trenches quicker.

A flexible, durable, cost-effective alternative to copper and other materials, MUNICIPEX offers fast and easy installation. Whether it's new construction, replacements or repairs, MUNICIPEX is ready to help tackle your next project.



Specify pipe that stands up to tough environments.

MUNICIPEX is designed to withstand harsh conditions without compromising performance. With this system, you have extra piece of mind even when using native backfill. MUNICIPEX is the preferred choice for resiliency



Build systems that serve generations.

As an engineered solution that optimizes performance and longevity, MUNICIPEX is equipped to handle even the toughest environments. From corrosion to creep resistance, rest assured that MUNICIPEX will stand true for years.

MUNICIPEX piping saves you on time, materials and cost.

- Flexible + lightweight
- Kink resistant
- Erosion + corrosion resistant
- Chemical resistant
- Mineral build-up resistant
- Chlorine resistant
- Freeze-break resistant
- Impact + abrasion resistant
- Slow crack growth resistant
- Native backfill compatible
- UV resistant up to 1-year







**UV
resistant
up to
1 year**

MUNICIPEX[®] water service

Main to meter

Engineered for water service line applications, MUNICIPEX water service delivers potable water from the water main to any residential or commercial structure. MUNICIPEX water service is a clean, easy and cost-effective alternative to copper, HDPE and other materials.

MUNICIPEX water service is available in diameters 3/4 to 2 in. (SDR9 CTS) and coil lengths up to 1,000 ft (304.8 m), backed by our 25-year limited warranty



MUNICIPEX water service benefits:

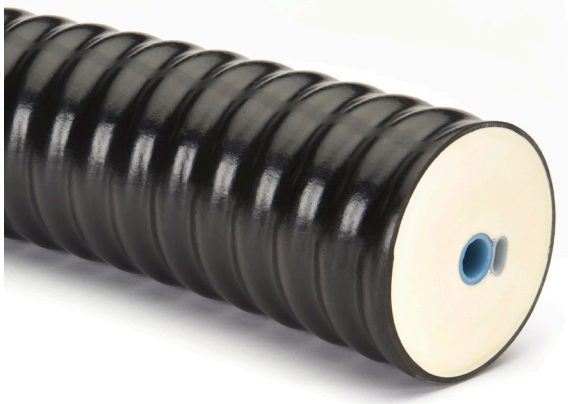
- Flexible and lightweight
- Kink resistant
- Corrosion and chemical resistant
- Impact and abrasion resistant
- Native backfill compatible
- Freeze-break resistant
- Compatible with AWWA C800 fittings

MUNICIPEX[®] pre-insulated water service

Cold climate applications

MUNICIPEX pre-insulated water service is specially designed for potable water distribution in cold climates that require an extra level of protection from freezing, or when laying pipe below the frost line is not possible.

Comprising MUNICIPEX water service pipe with attached heat trace channel, surrounded by a CFC-free polyurethane foam insulation and corrugated LDPE outer casing, MUNICIPEX pre-insulated water service is both durable and reliable.



Available in 1 in. and 2 in.
carrier pipe diameters and
coil lengths up to 290 ft
(88.4 m).

Backed by our 25-year
limited warranty.



MUNICIPEX[®] force main

Wastewater applications

MUNICIPEX force main pipe is used in residential grinder pump applications for conveying wastewater from the home to the main wastewater line .

MUNICIPEX force main is color-coded with a green coating and withstands harsh conditions without compromising performance or pressure. Manufactured using the same process as our water service line, MUNICIPEX force main is offered in diameters 1 1/4 in. to 2 in. (SDR9 CTS) with coil lengths up to 500 ft (152.4 m). Backed by a 5-year limited warranty.



MUNICIPEX[®] reclaim

Reclaimed water applications

Designed to transport reclaimed water from the water treatment facility to the point of use, MUNICIPEX reclaim is color-coded with a purple PE shield that protects the pipe against ultraviolet light and indicates use in reclaimed water applications.

MUNICIPEX reclaim is intended to facilitate water conservation through transporting non-potable reclaimed water from the gray water treatment plant to point-of-use applications. Gray water reuse provides a drought-proof water source that eases water scarcity concerns and lightens the demands placed on alternative water sources.

MUNICIPEX reclaim is meant for use across various markets aiming to participate in gray water reuse, such as irrigation and recreation, industrial applications, fire protection service, residential homes and commercial buildings.

- Available in 3/4 - 2 in. diameter (SDR9 CTS)
- Coil lengths up to 1,000 ft (304.8 m)
- 25-year limited warranty
- UV resistant up to 1-year





Installation advantages

MUNICIPEX is supplied in long coils to reduce the number of couplings, minimizing waste and speeding installation. At five-to-six times lighter in weight than copper, MUNICIPEX is easier and safer to handle. With consecutive footage marks every 3 ft (0.9 m) to indicate how much material is available, planning your next installation is simple.

MUNICIPEX meets or exceeds the following industry standards:

- Certified to AWWA C904
- Certified to CSA B137.5 and PPI TR-3
- Meets chlorine resistance requirements of ASTM F876, when tested in accordance with ASTM F2023
- Certified to NSF/ANSI Standard 14 and 61*
- Tested in accordance with UV resistance to ASTM F2657 for a period of 1 year
- Compatible with AWWA C800 underground water service fittings including:
 - ASTM F1055 electrofusion fittings
 - CTS thermoplastic compression fittings
- Produced in SDR9 copper tube sizes (CTS)
- 2 in. MUNICIPEX can be tapped with service saddles, see REHAU *Technical Bulletin 259*

*MUNICIPEX water service only

Minimum burst pressure requirements

- 475 psi @ 73.4°F (3,310 kPa @ 23°C)

Temperature and pressure ratings

- 200 psi @ 73.4°F (1,380 kPa @ 23°C)**
- 160 psi @ 73.4°F (1,105 kPa @ 23°C)
- 100 psi @ 180°F (690 kPa @ 82°C)

**Continuous-use ratings using design factor of 0.63.
See REHAU *Technical Bulletin 239* for clarification.



For more information, visit
www.municipex.com

For updates to publication, visit na.rehau.com/resourcecenter

The information contained herein is believed to be reliable, but no representations, guarantees or warranties of any kind are made as to its accuracy, suitability for particular applications or the results to be obtained therefrom. Before using, the user will determine suitability of the information for user's intended use and shall assume all risk and liability in connection therewith.

© 2022 REHAU

855.741 12.2022